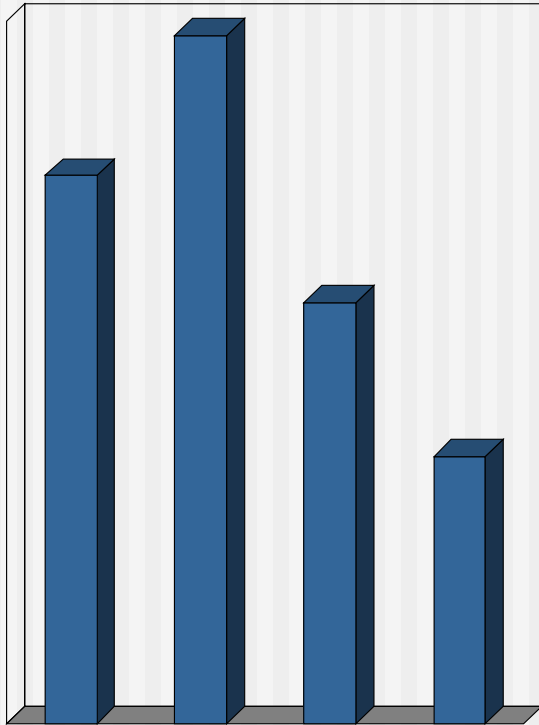




Tables and Graphs



	A	B	
Y	1	2	3
Z	3	4	7
	4	6	10

Aspects of a presentation (result of research)

Three aspects	What are they?	Relative importance
Content	Content of presentation, the words	7 %
Vocal	What they hear: voice tone, pitch, volume, speed, accent, emphasis	38 %
Visual	What they see: body language, clothes, hair, visual aids	55 %



Methods of Presenting Information

- Table
- Matrix
- **Graph**
- Diagram
- Flow chart
- Map

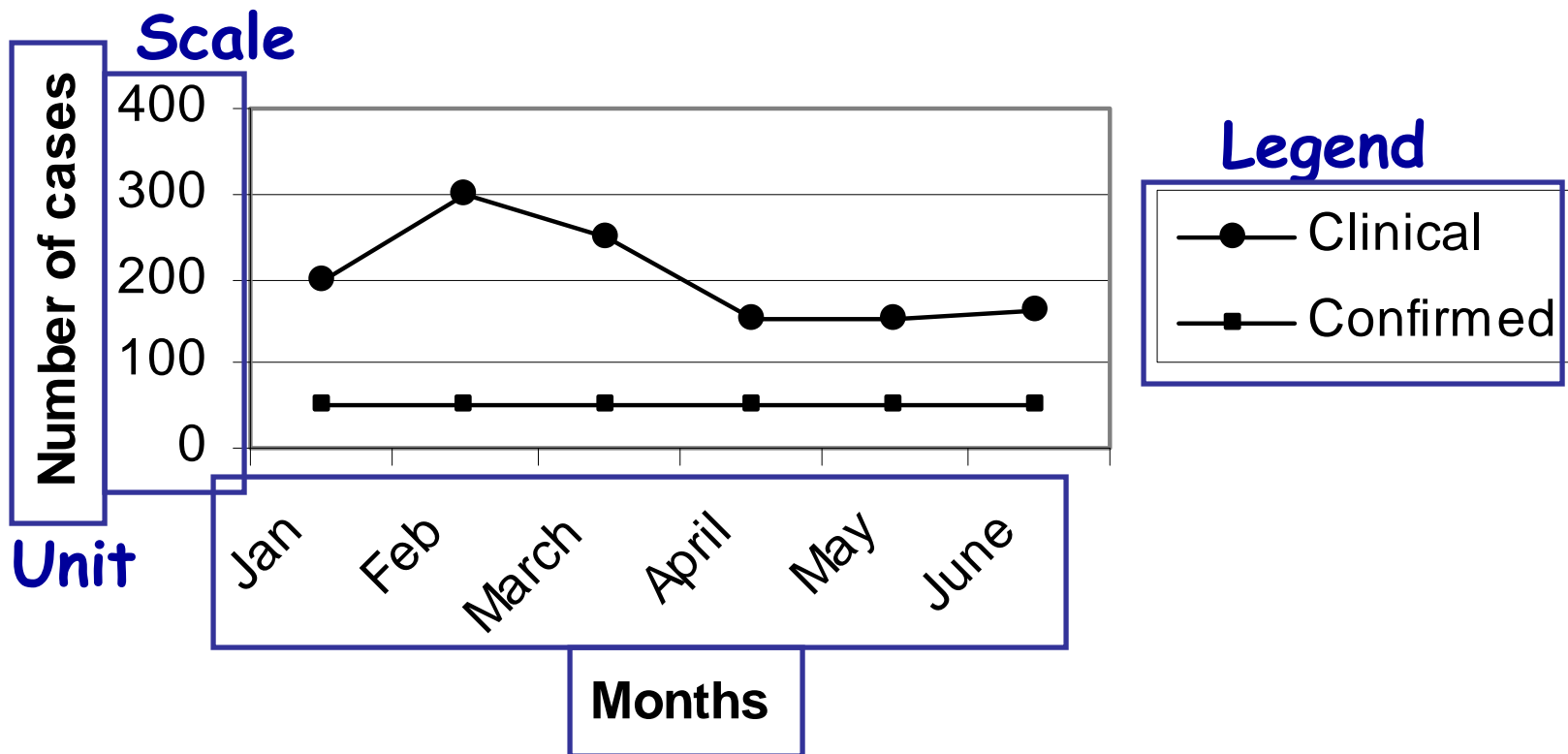


Graphs: Elements 1

- Title
- Identified by number
- Axes X and Y
- Scale
- Unit of measure
- Legend
- Footnote

Graphs: Elements 2

Title Number of malaria cases (clinical and confirmed), district A, Jan-June 2000.



Graphs: Types

- Types of graphs
 - Stem-and-leaf
 - Histograms
 - Line graphs
 - Simple and Cumulative
 - Bar charts
 - Vertical and horizontal
 - 100 % bars
 - Area graphs
 - Pie charts, donuts
 - Scatter diagrams

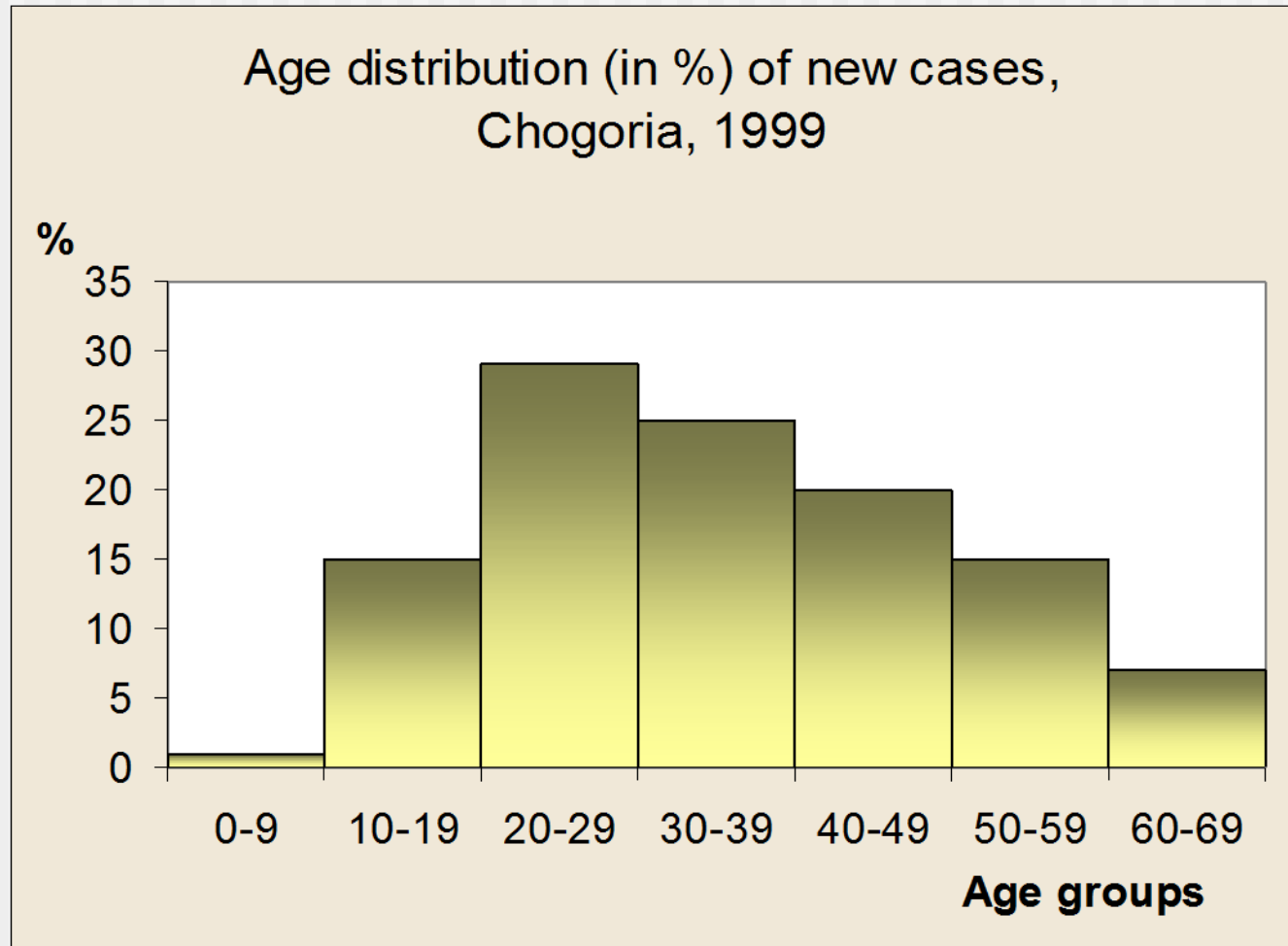
Graphs: Stem-and-leaf

Data:

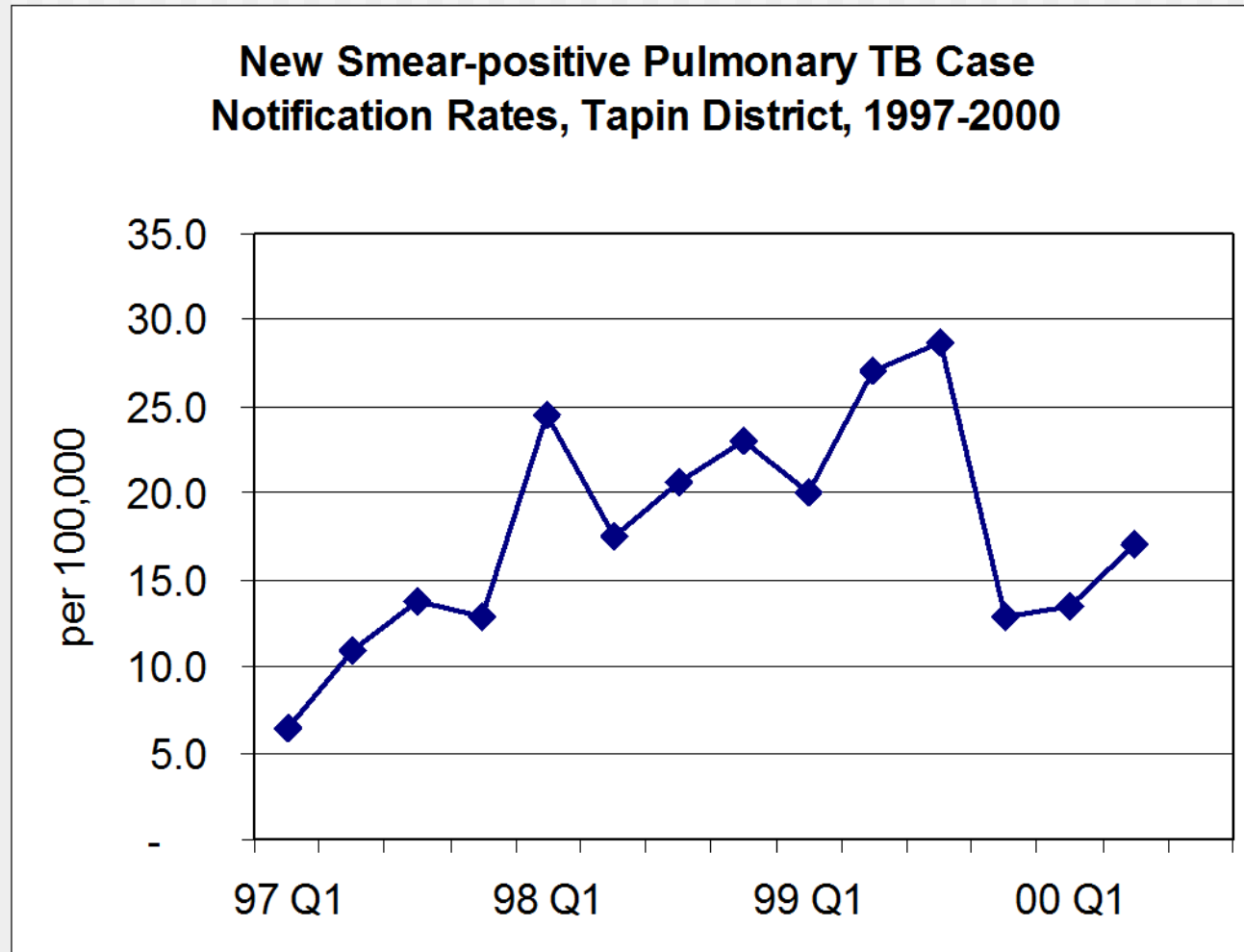
8 10 19 25 29
35 35 36 41
42 44 45 46
48 50 55 67
72

0-9	8					
10-19	10	19				
20-29	25	29				
30-39	35	35	36			
40-49	41	42	44	45	46	48
50-59	50	55				
60-69	67					
70+	72					
Age groups						

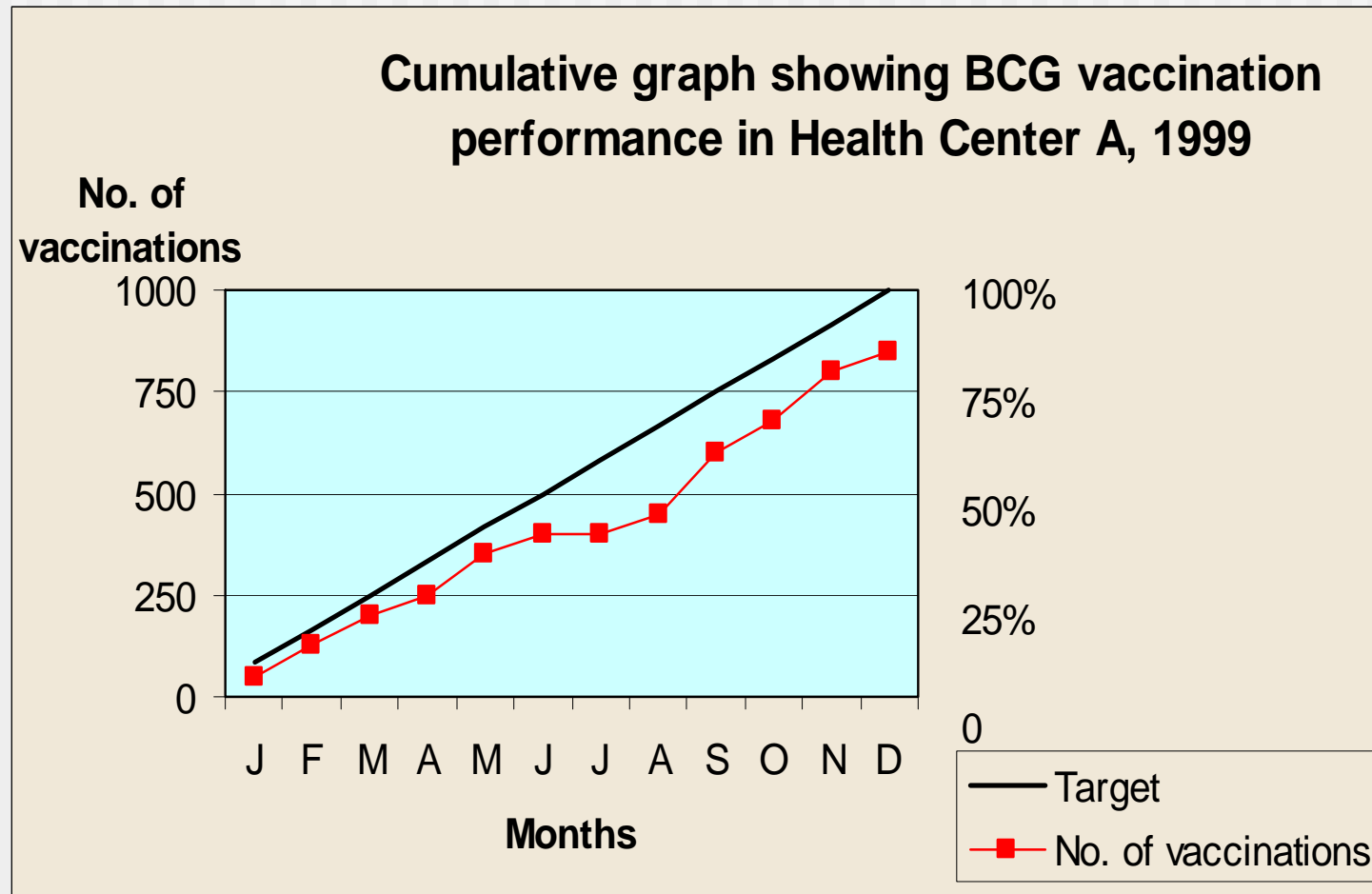
Graphs: Histogram



Graphs: Line graph



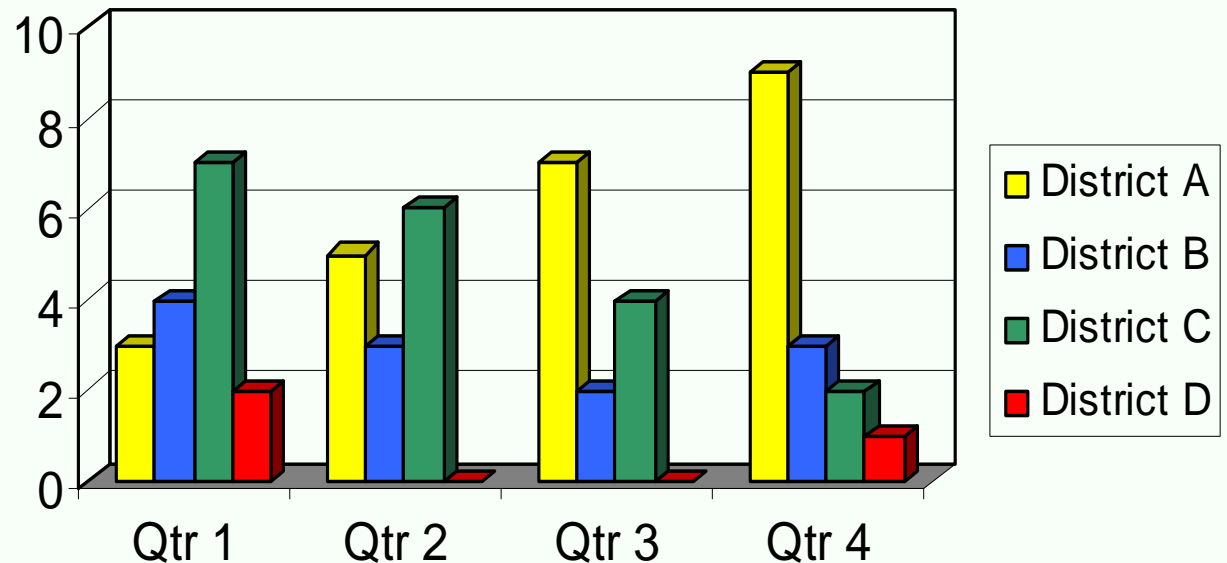
Graphs: Cumulative line graph



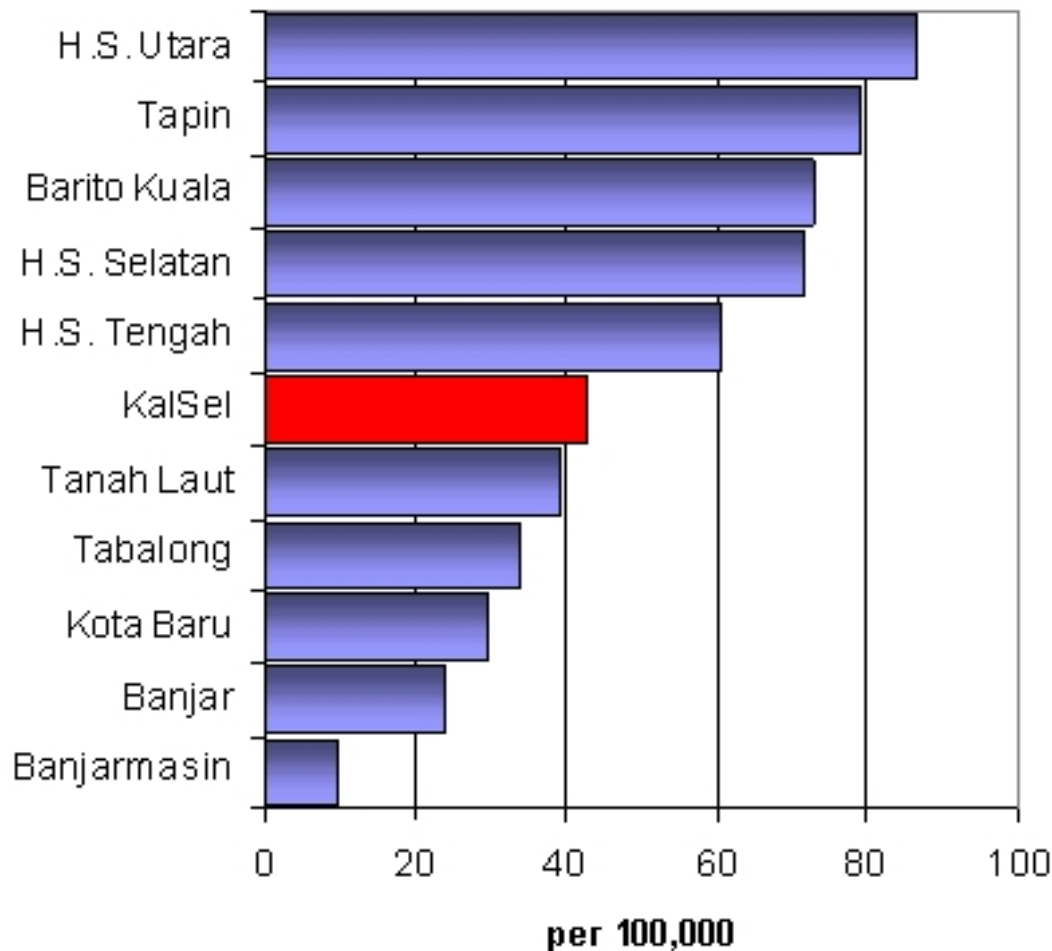
Graphs: Bar charts 1

New Tetanus Neonatorum cases, by District, 1999, per quarter

**Number of
Cases**



Graphs: Bar Charts 2

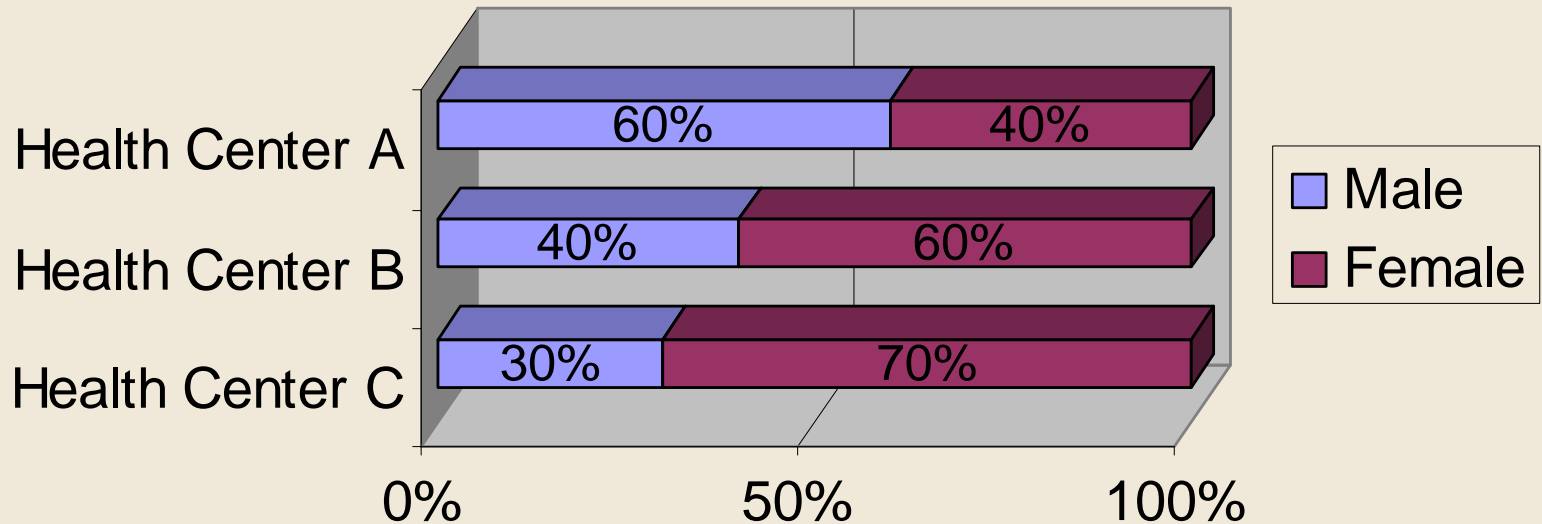


Ranked Bar Chart

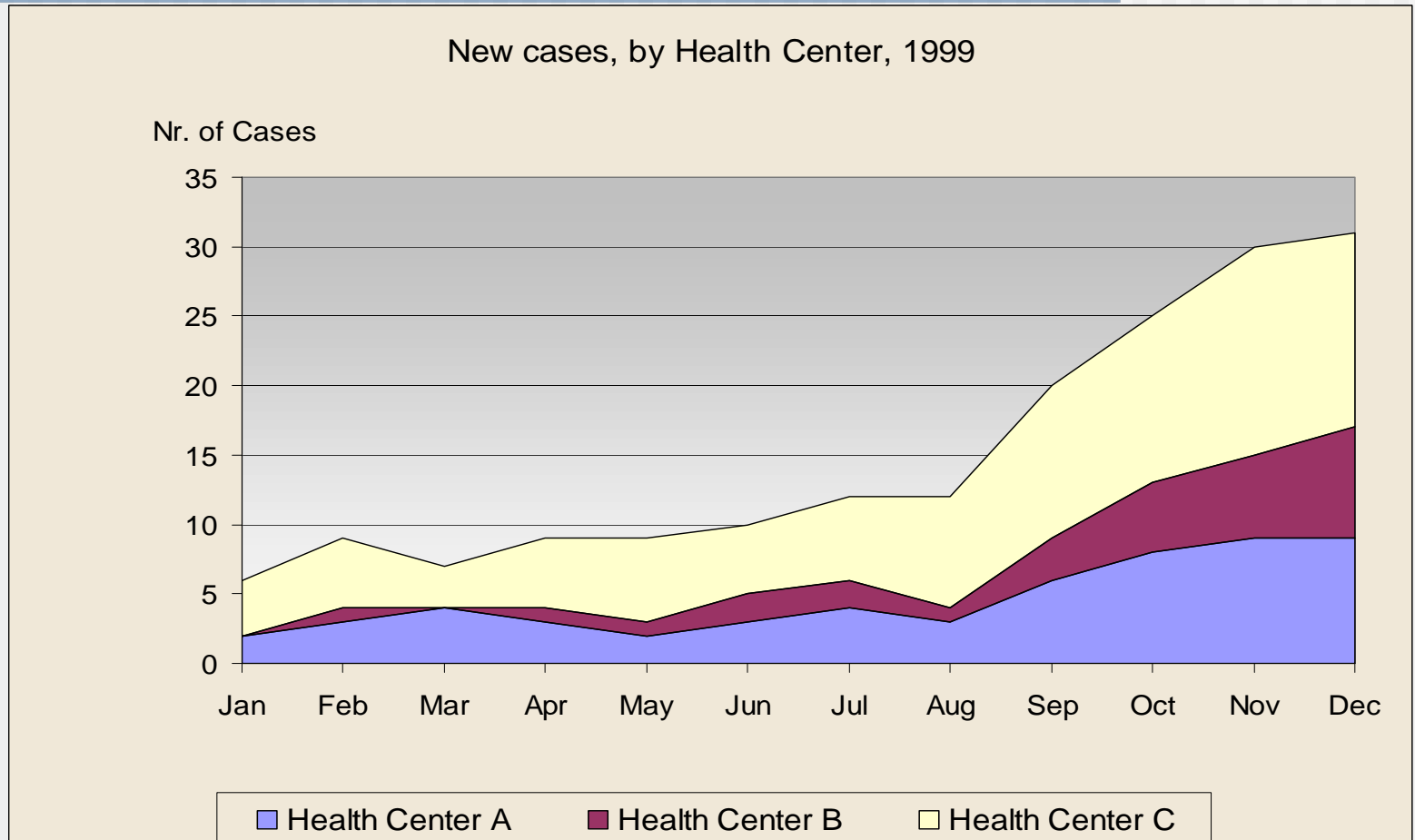
Ranked districts in order of Pulmonary Tuberculosis Case Notification Rate (smear-pos. cases), KalSel, 1999

Graphs: Stacked Bar Chart

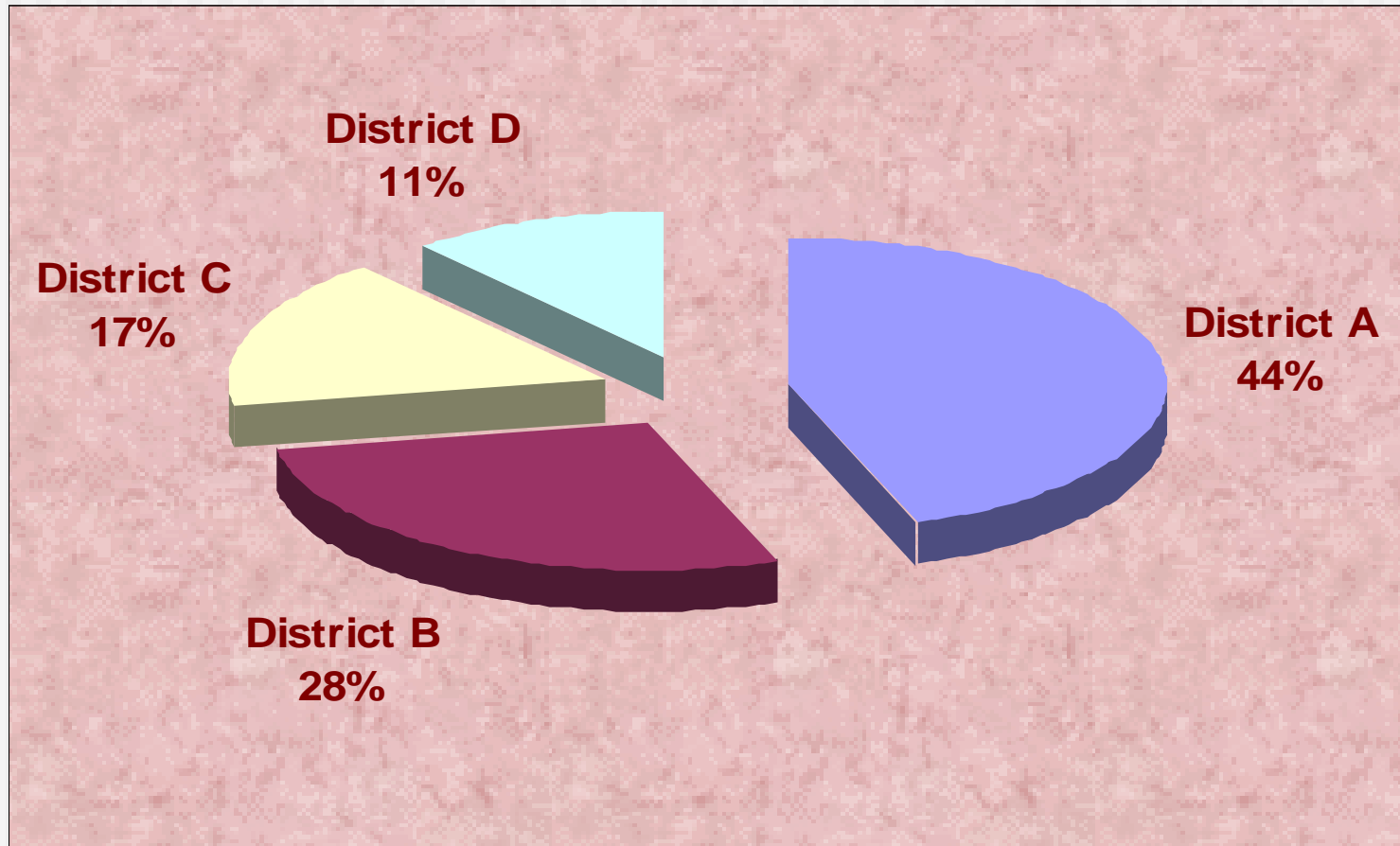
New Cases, by sex and by Health Center, Province Z, 1999.



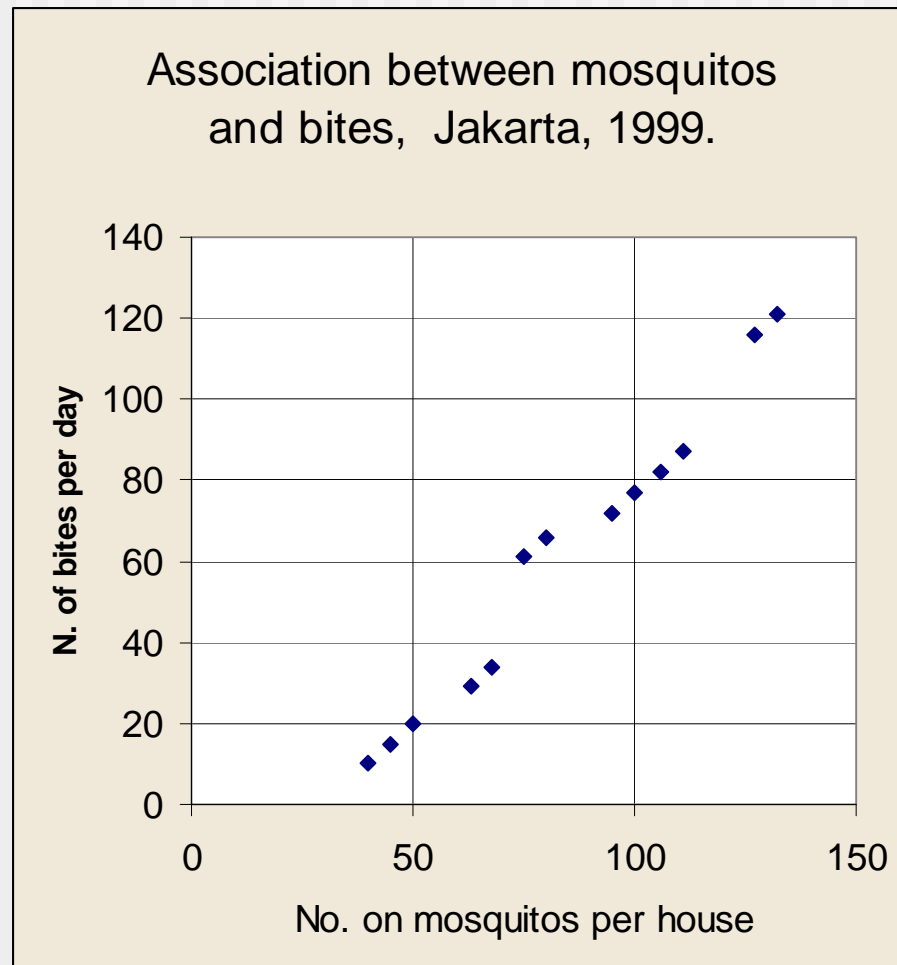
Graphs: Area graphs



Graphs: Pie charts



Graphs: Scatter diagrams





Methods of Presenting Information

- Table
- Matrix
- Graph
- Diagram
- Flow chart
- **Map**

Figure 7. Distance surface to 8 health facilities with TB diagnostic tools and spatial distribution of all TB cases at village level in Banjarnegara (Oct. 1999 - Sept. 2000)

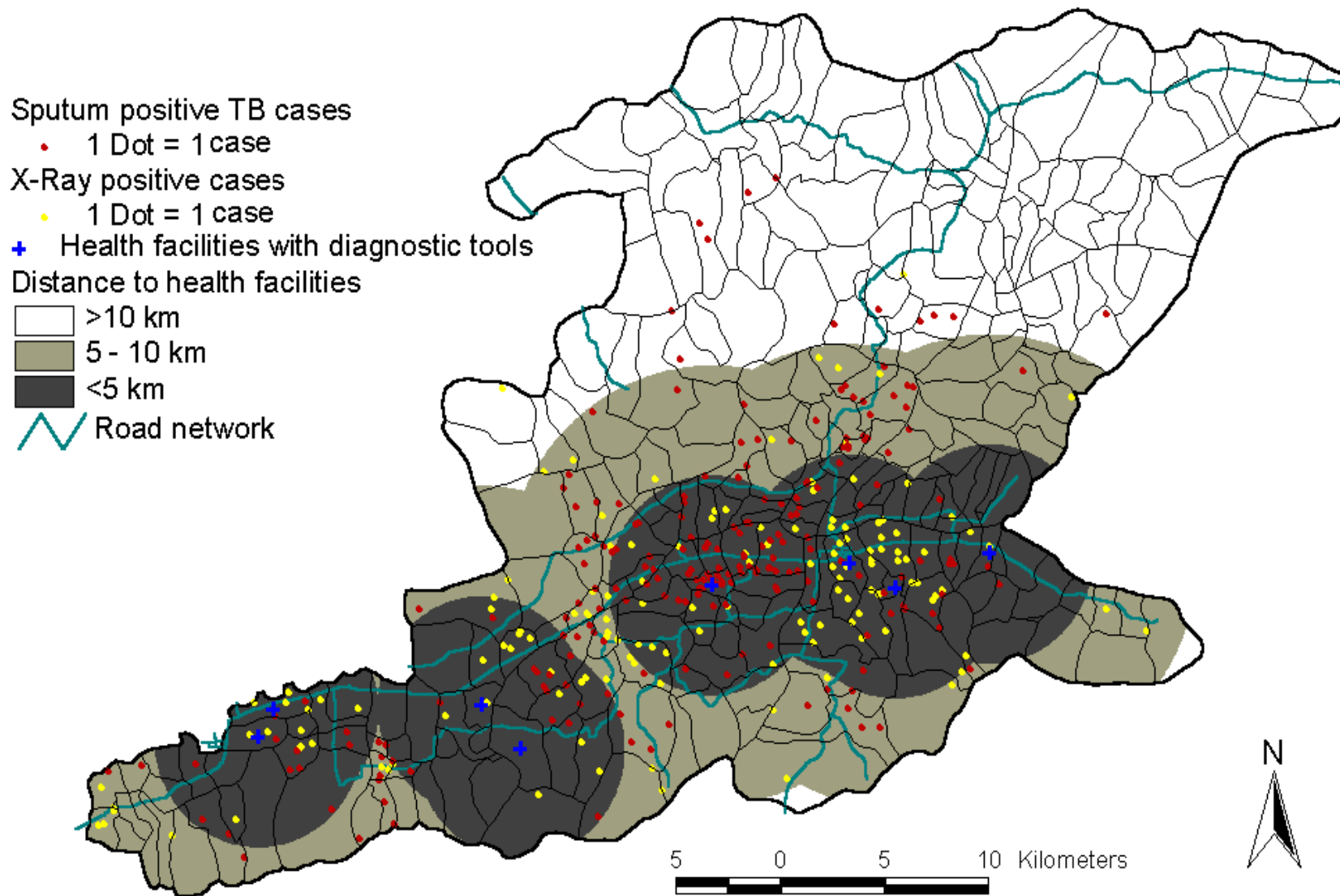


Figure 8. Community accessibility to 8 health facilities with microscopy and 2 new proposed health centres with microscopy in Banjarnegara

