



---

From Global Strategy to National Action:  
Workshop for Health Service Managers in Charge of  
Leprosy Control Programmes

Session 7 Reporting and Monitoring

Topic: Errors in graphs



# Errors & lessons: Tables

<b>Pseudo-precision</b>		
<b>Example:</b>		
<b>Cases</b>	<b>Men</b>	<b>% Men</b>
7	5	71.4285714 %

If dataset < 100: max. one digit behind decimal point

- Example:  $5/7 = 0.7$

For dataset <1000: Use max. three digits.

- Example:  
291 or 29.1 or 2.91

For larger sets: no decimals required

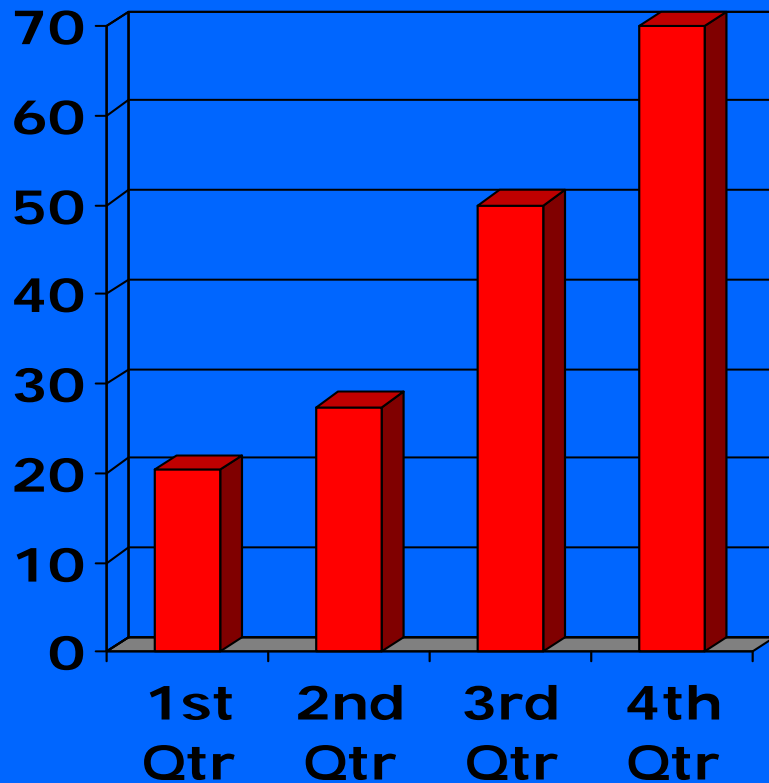


# Errors & lessons: Tables 2

	Town X	Town Y	All towns
Men	10=33%	20=40%	30=73%
Women	20	30	50
Total	30 = 100%	50 = 100%	80



# Errors & lessons: Graphs

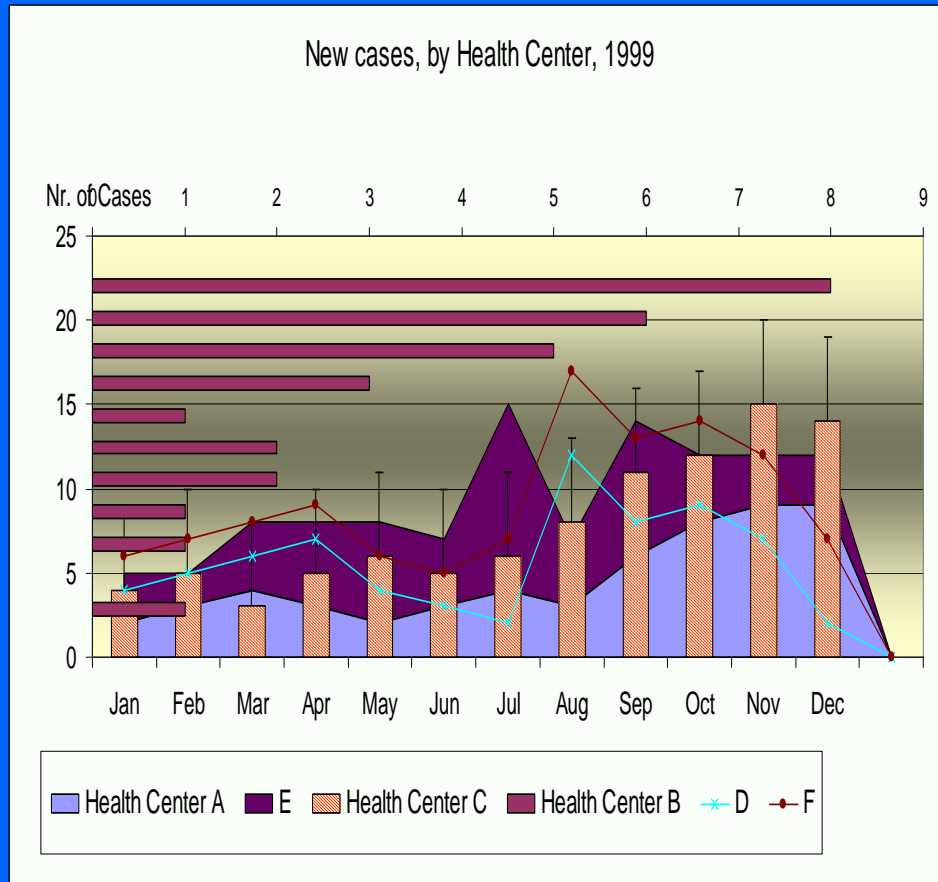


Define your message before you create a graph

Test the graph: Can they understand it?



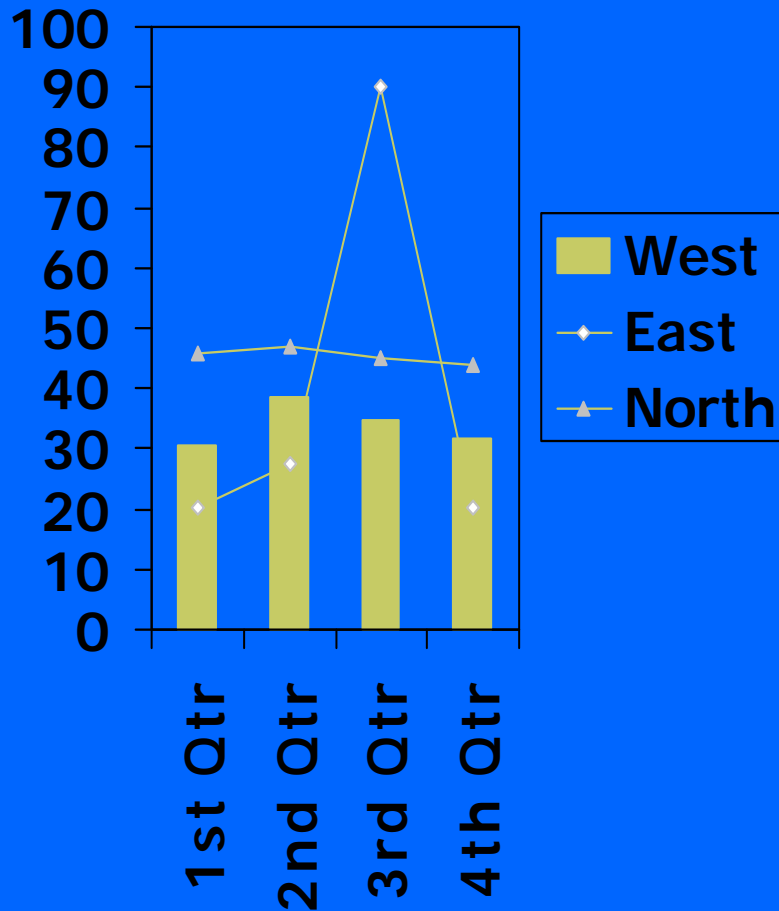
# Errors & lessons: Graphs



Keep  
it  
simple!



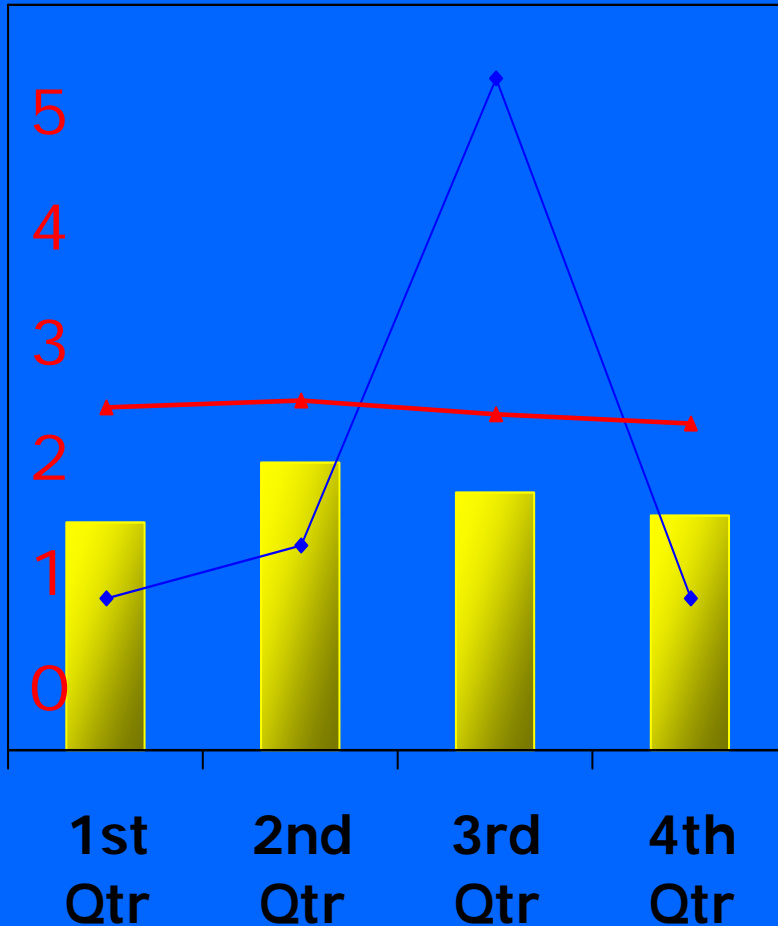
# Errors & lessons: Graphs



Data elements should be prominent



# Errors & lessons: Graphs

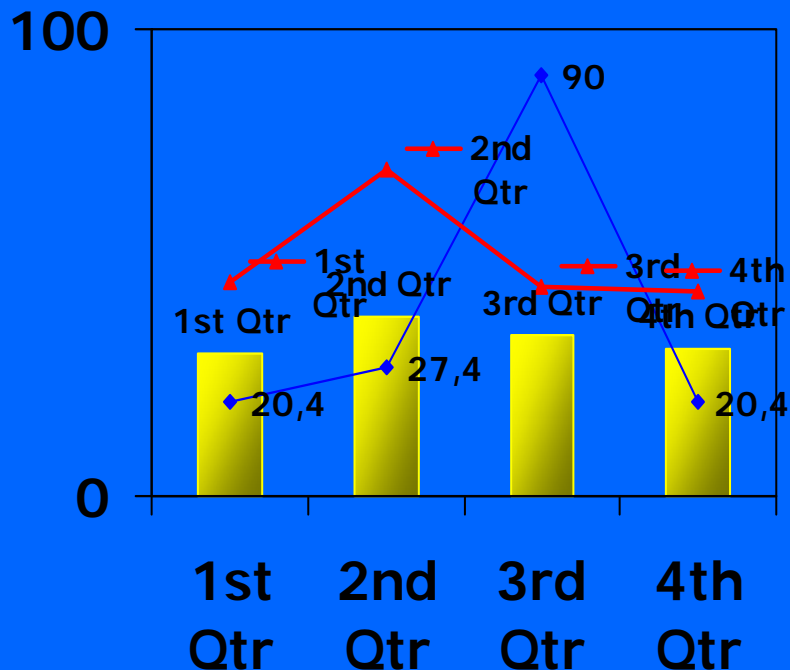


Use scales  
and outside  
tickmarks



# Errors & lessons: Graphs

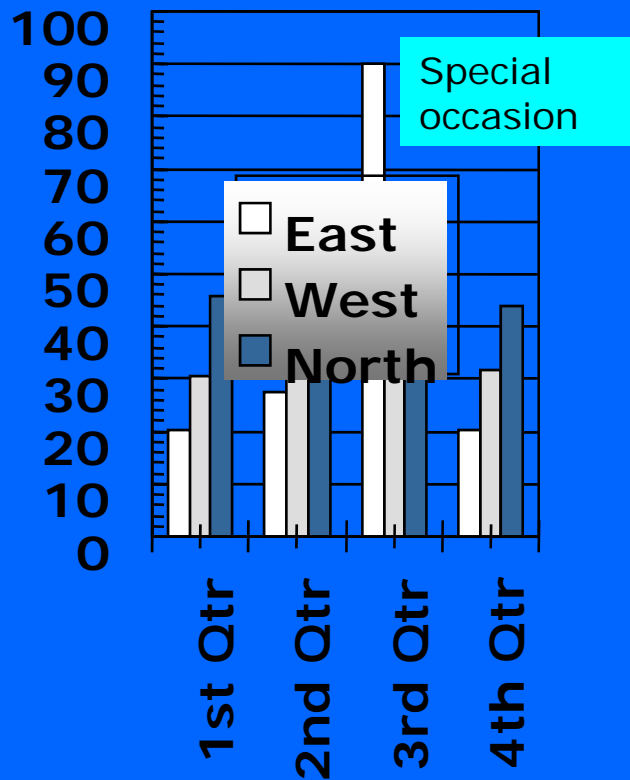
Cases and rates,  
Chogoria, 1999



Data labels  
should not  
interfere with the  
graph's clarity



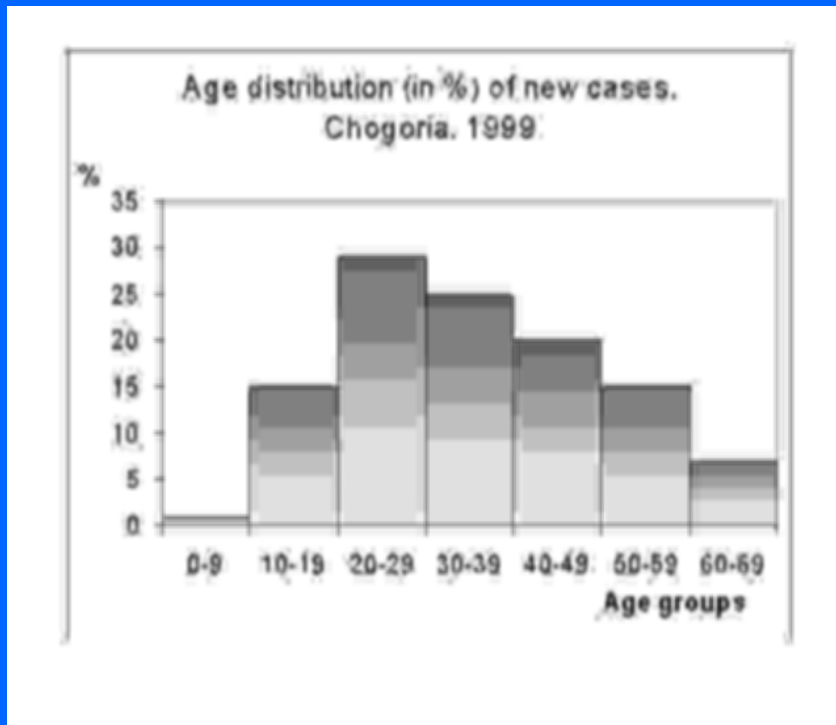
# Errors & lessons: Graphs



Keep legends, markers and tickmarks away from the data region

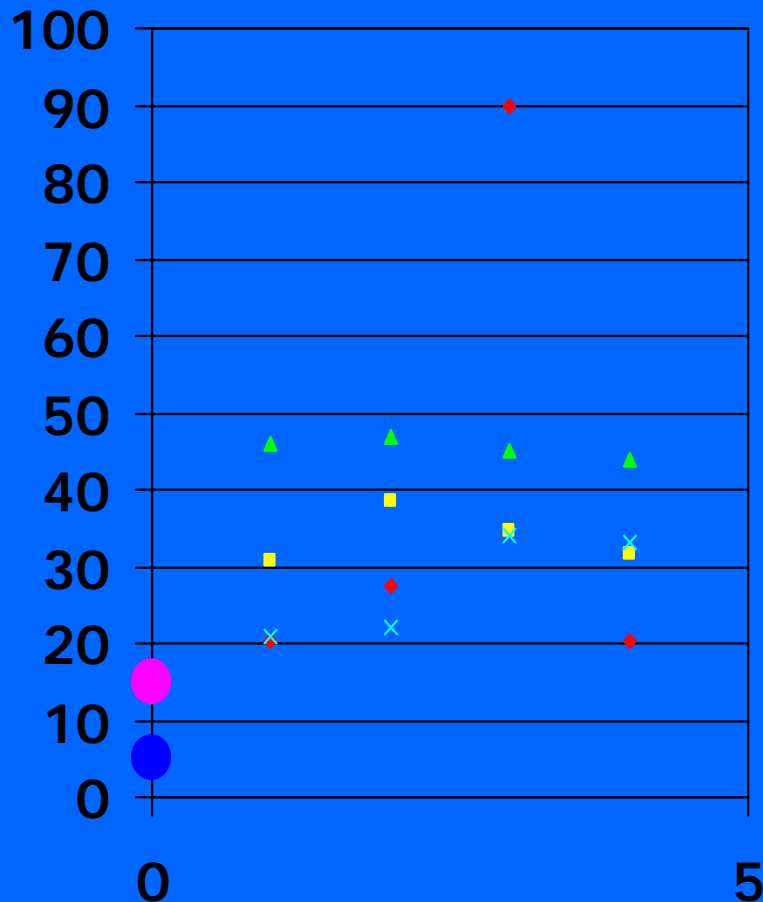
# Errors & lessons: Graphs

Beware of loss of information when photocopying:  
Use large fonts,  
clear and bold  
lines





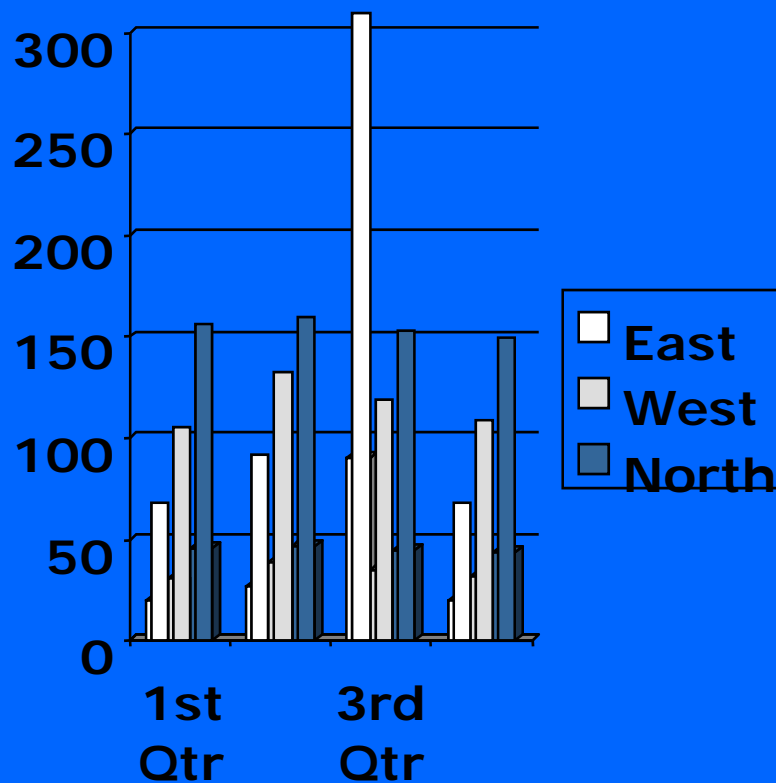
# Errors & lessons: Graphs



Do not place data points on the X-axis or Y-axis

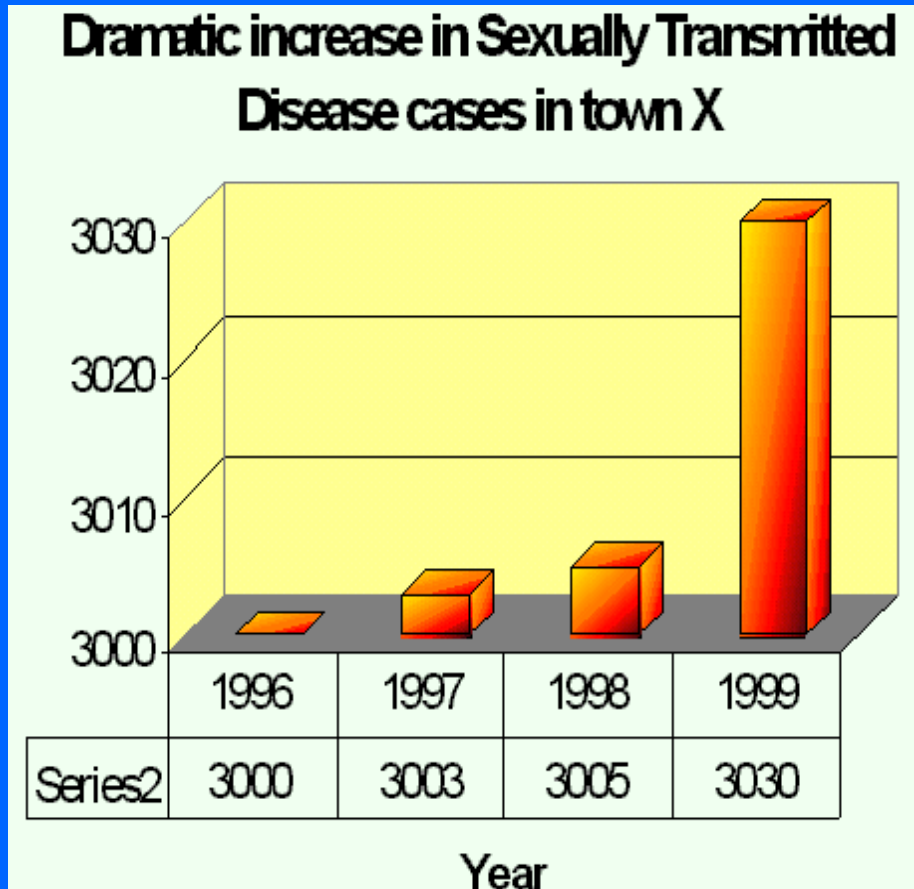


# Errors & lessons: Graphs



Occupy the data region as much as possible

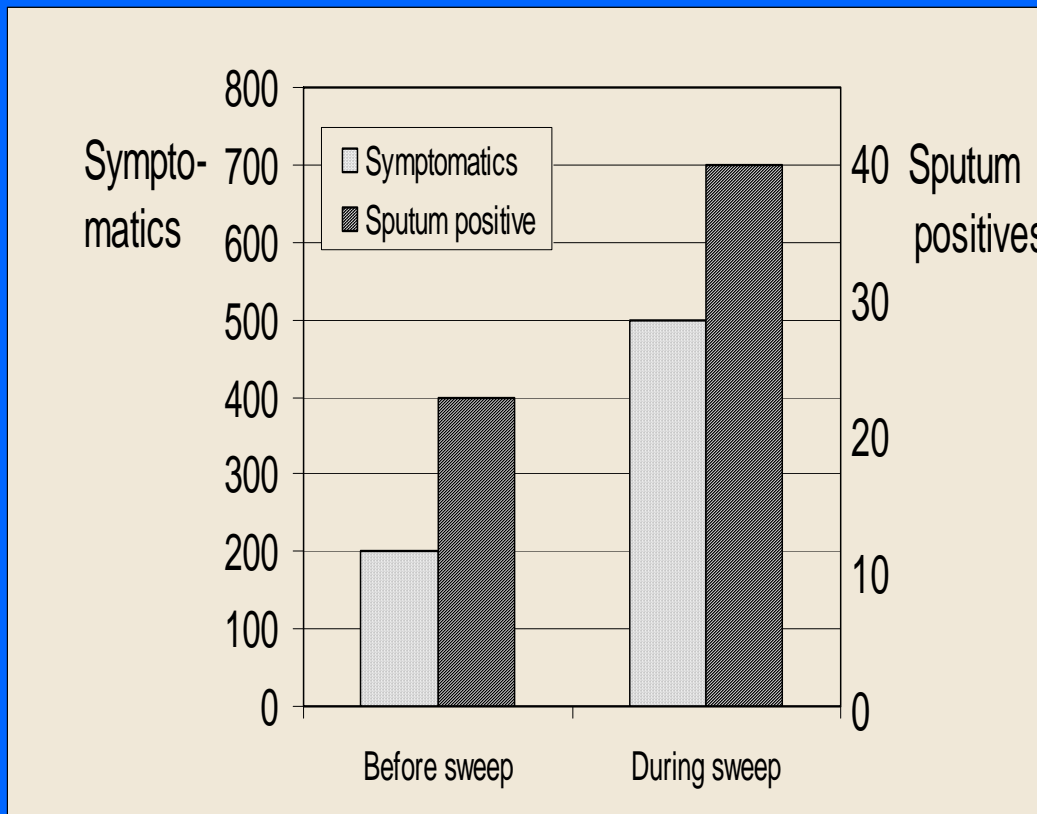
# Errors & lessons: Graphs



Almost always start with the value zero on the Y-axis.



# Errors & lessons: Graphs



Using two scales on the Y-axis can be confusing.