



# Port of Spain, Trinidad, 21-24 April 2008

---

From Global Strategy to National Action:  
Workshop for Health Service Managers in Charge of  
Leprosy Control Programmes

## Session 7 **Reporting and Monitoring**

Presentation of data in graphs



# Aspects of a presentation

---

<b>Three aspects</b>	<b>What are they?</b>	<b>Relative importance</b>
Verbal	Content of presentation, the words	7 %
Vocal	What they hear: voice tone, pitch, volume, speed, accent, emphasis	38 %
Visual	What they see: body language, clothes, hair, visual aids	55 %



# Methods of Presenting Information

---

Table

Matrix

Graph

Diagram

Flow chart

Map



# Graphs: Elements 1

---

**Title**

**Identified by number**

**Axes X and Y**

**Scale**

**Unit of measure**

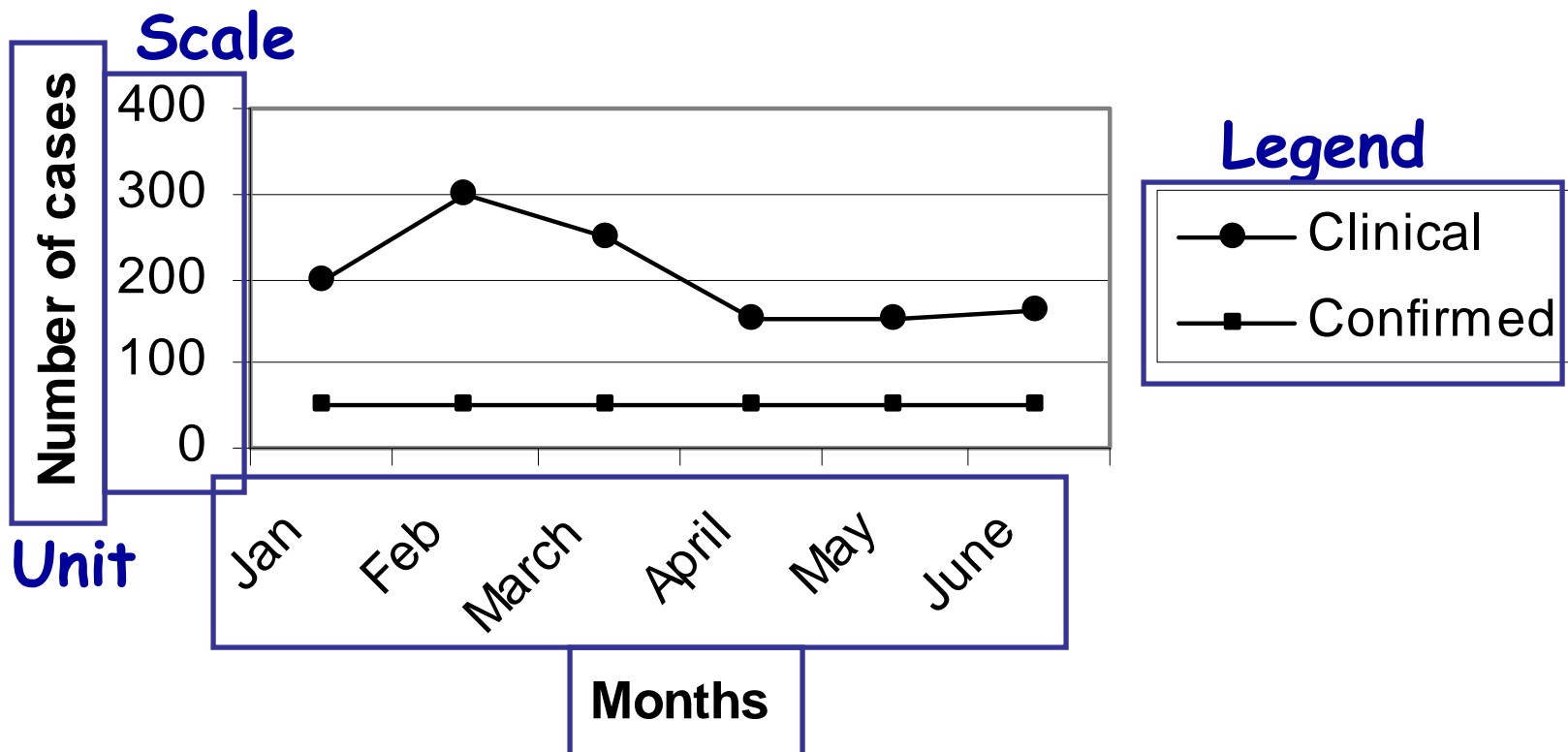
**Legend**

**Footnote**



# Graphs: Elements 2

**Title** Number of malaria cases (clinical and confirmed), district A, Jan-June 2000.





# Graphs: Types

---

## Types of graphs

- Stem-and-leaf
- Histograms
- Line graphs
  - Simple and Cumulative
- Bar charts
  - Vertical and horizontal
  - 100 % bars
- Area graphs
- Pie charts, donuts
- Scatter diagrams



# Graphs: Stem-and-leaf

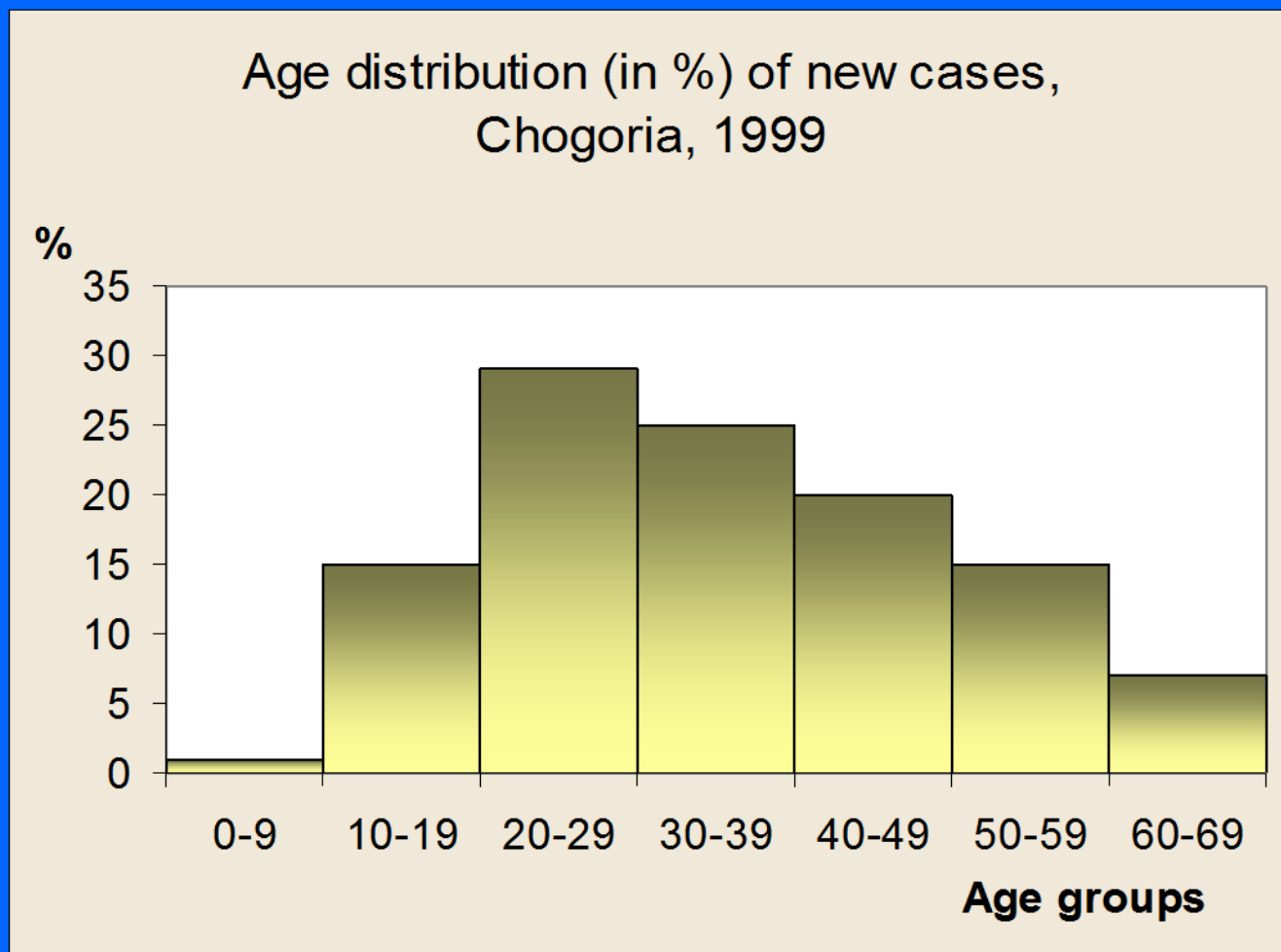
Data:

8 10 19 25 29 35  
 35 36 41 42 44  
 45 46 48 50 55  
 67 72

Age distribution of attenders						
Kulay Health Center, 14-8-2000						
0-9	8					
10-19	10	19				
20-29	25	29				
30-39	35	35	36			
40-49	41	42	44	45	46	48
50-59	50	55				
60-69	67					
70+	72					
Age groups						

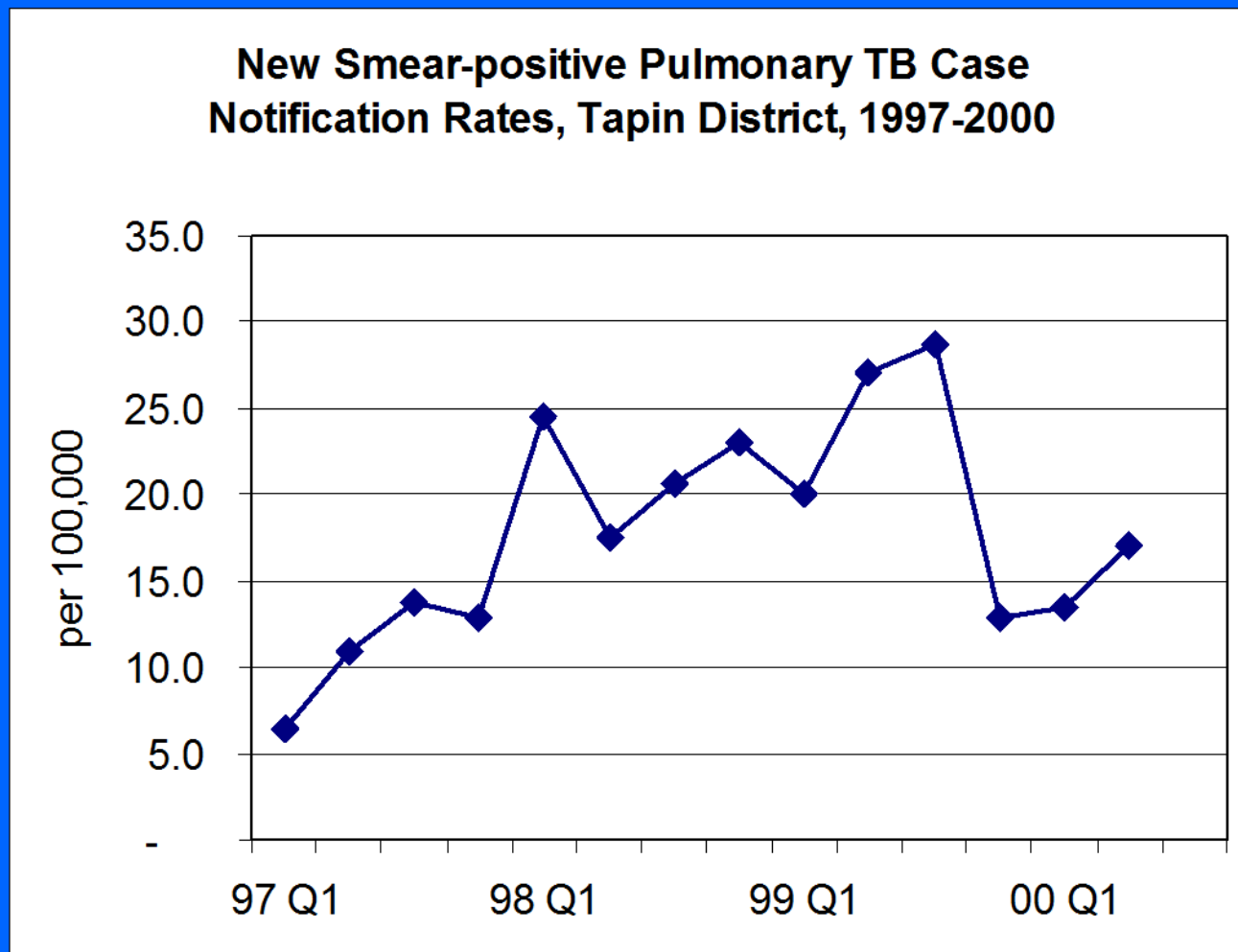


# Graphs: Histogram



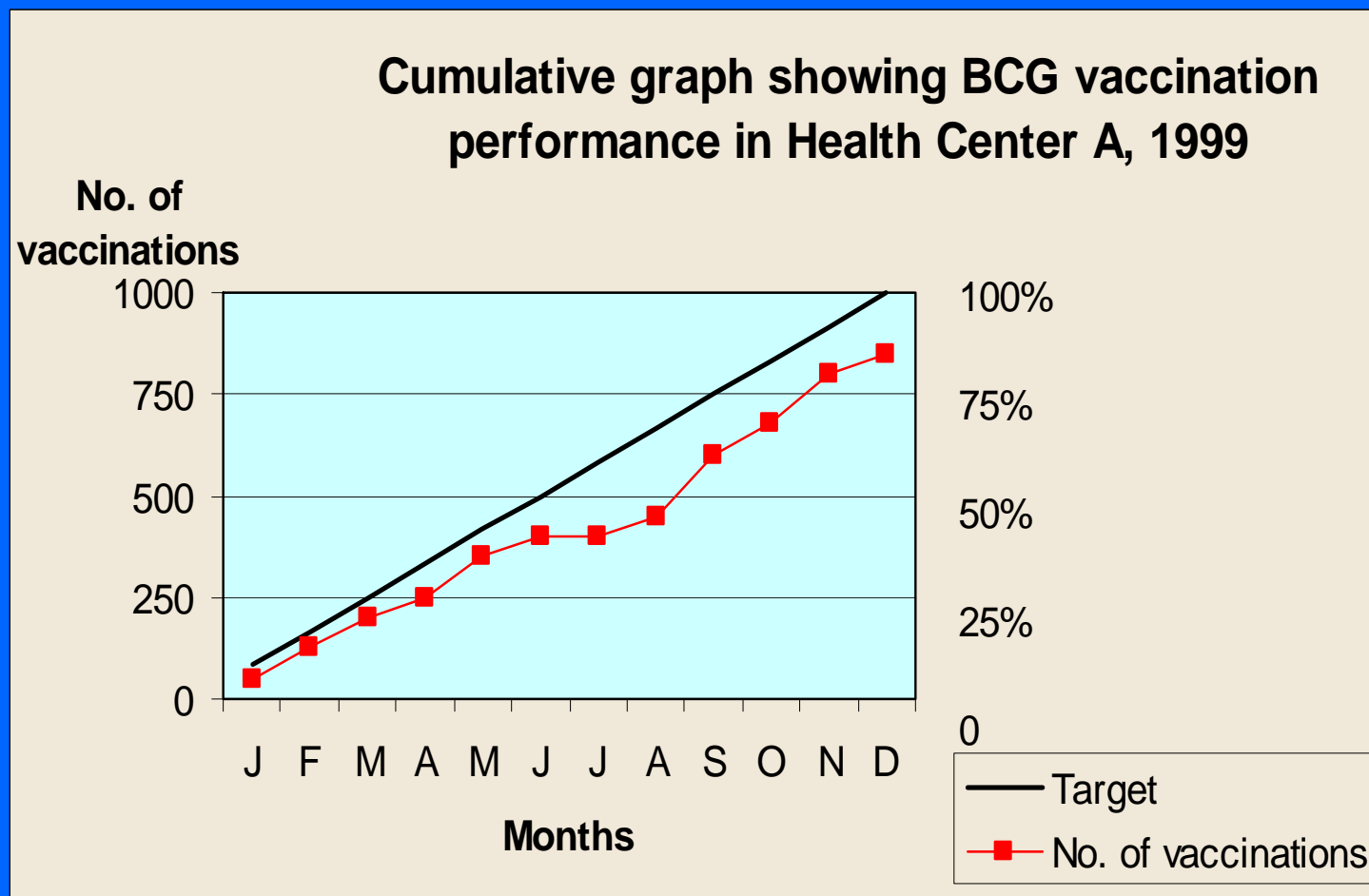


# Graphs: Line graph





# Graphs: Cumulative line graph

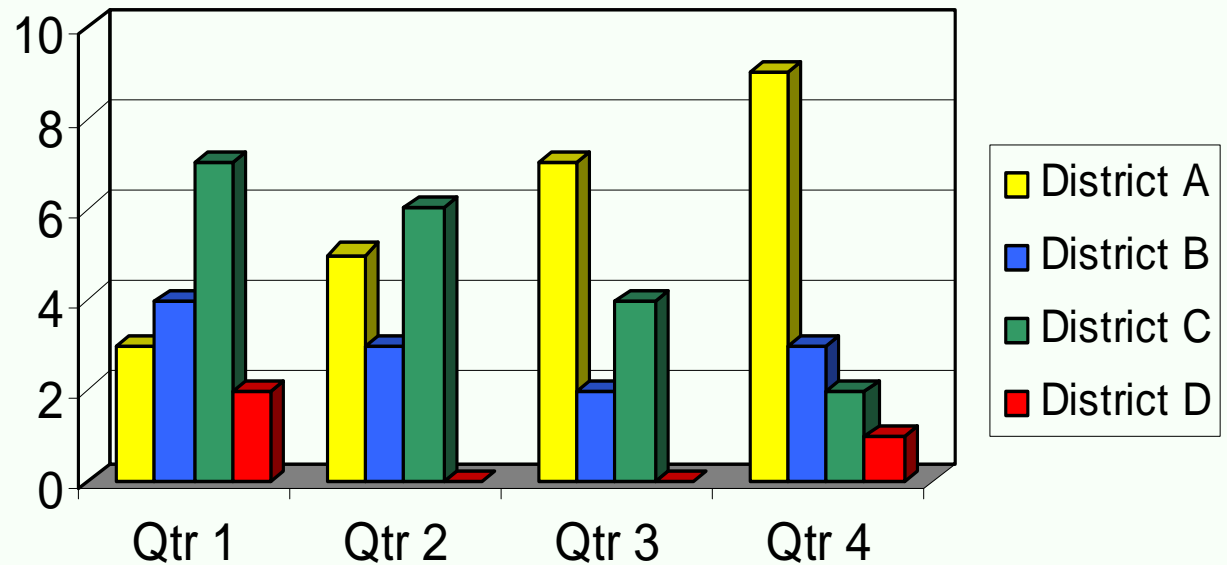




# Graphs: Bar charts 1

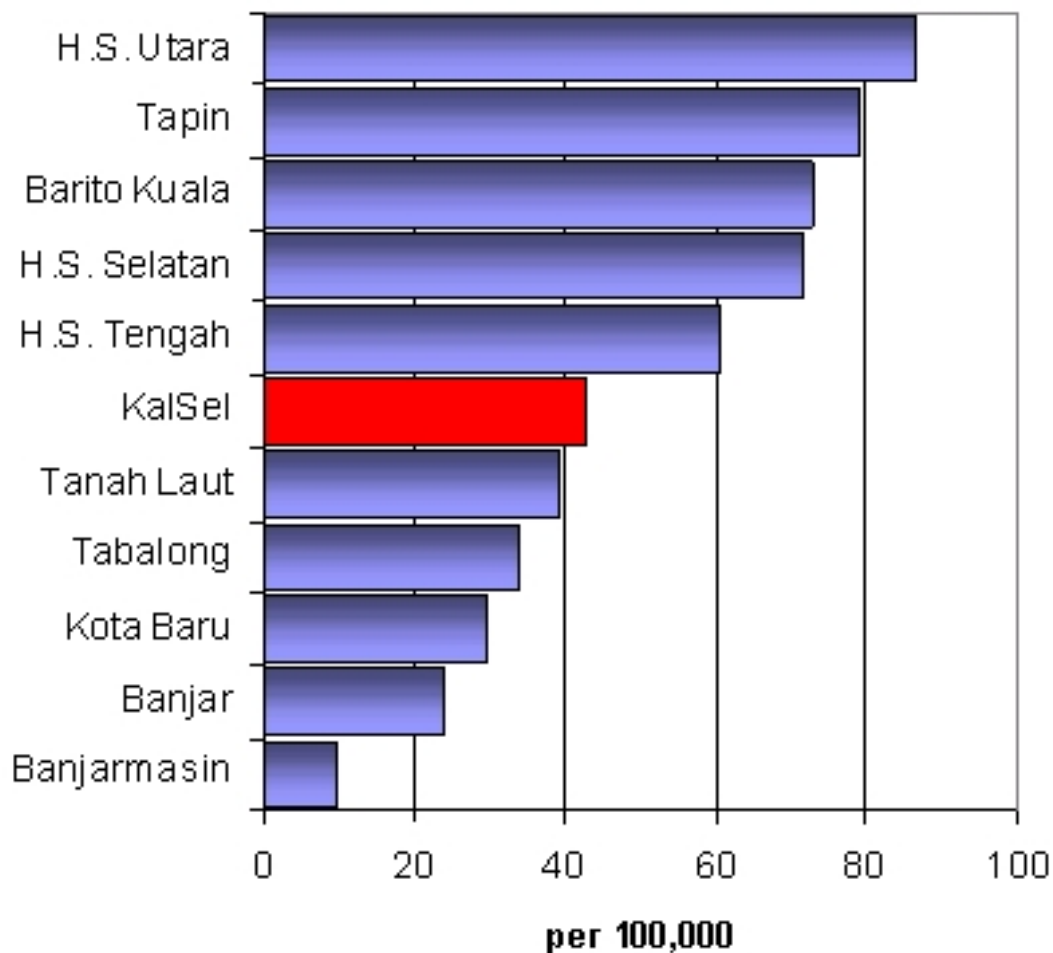
**New Tetanus Neonatorum cases, by District, 1999, per quarter**

**Number of  
Cases**





# Graphs: Bar Charts 2



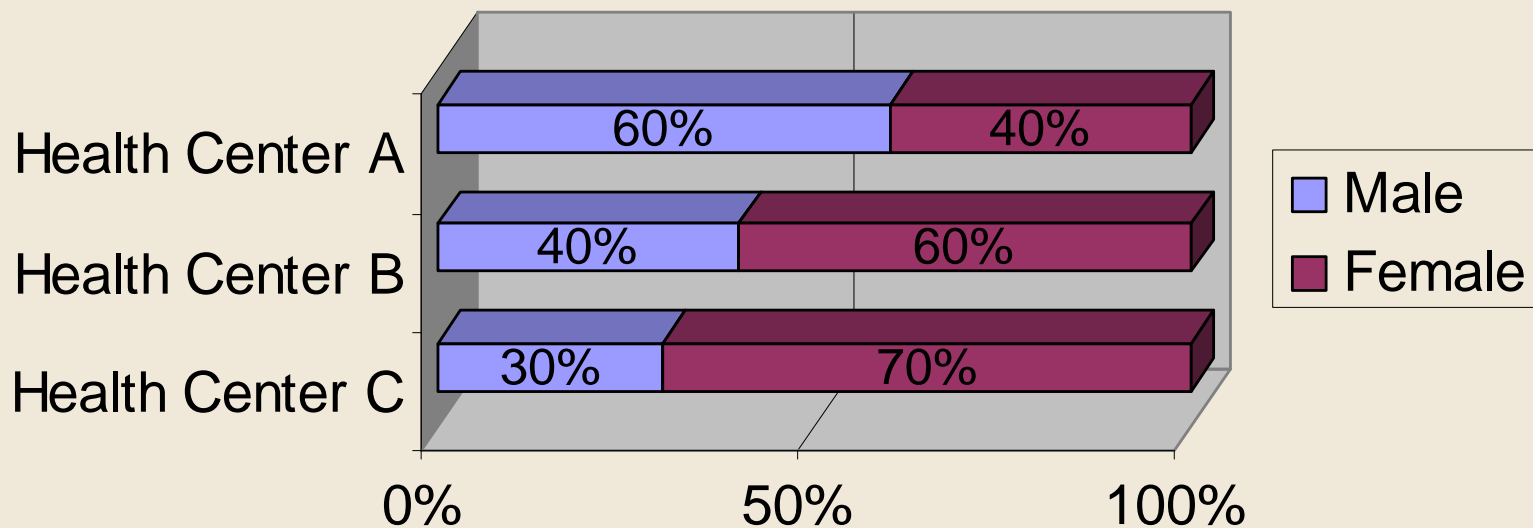
## Ranked Bar Chart

Ranked districts in order of Pulmonary Tuberculosis Case Notification Rate (smear-pos. cases), KalSel, 1999



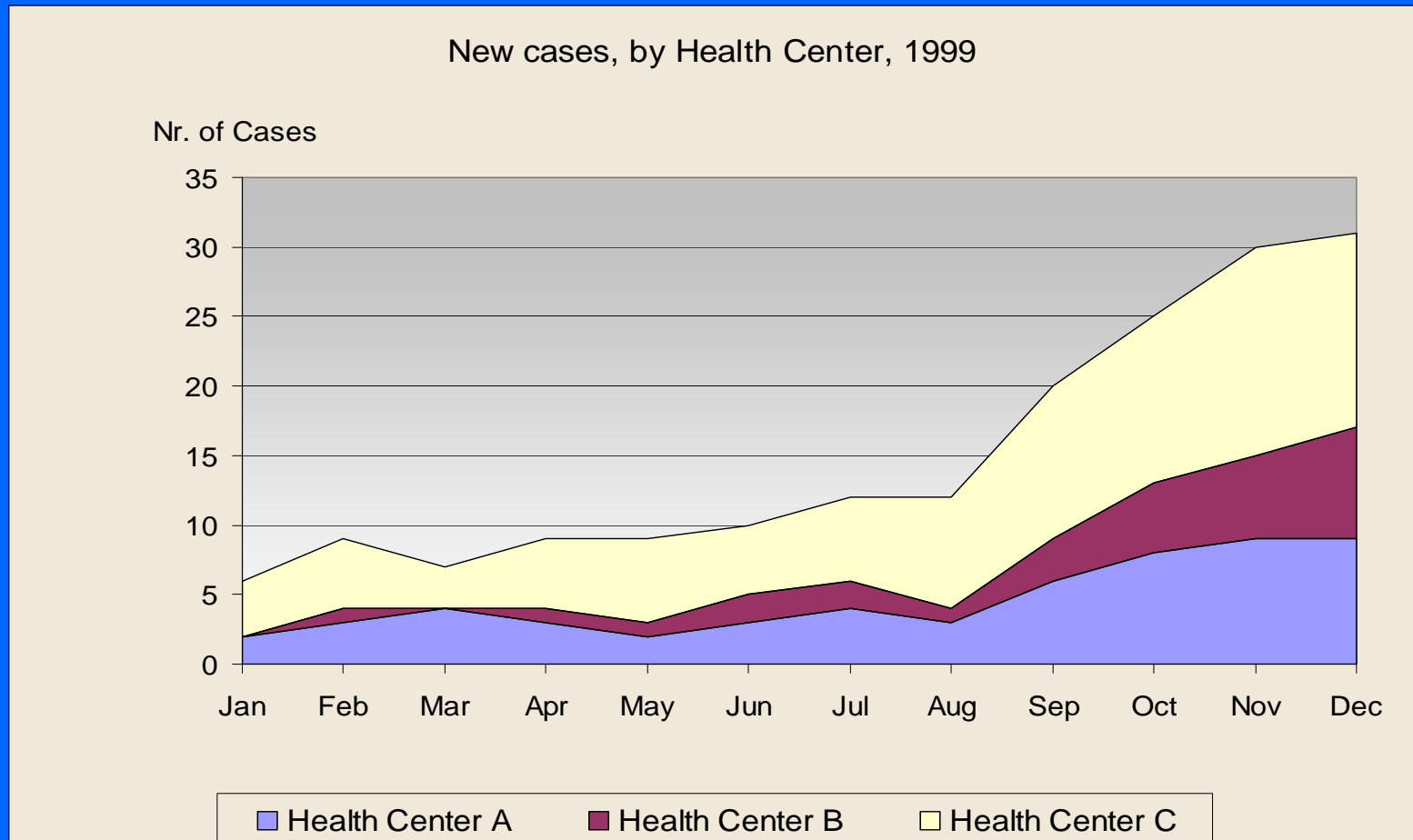
# Graphs: Stacked Bar Chart

## New Cases, by sex and by Health Center, Province Z, 1999.



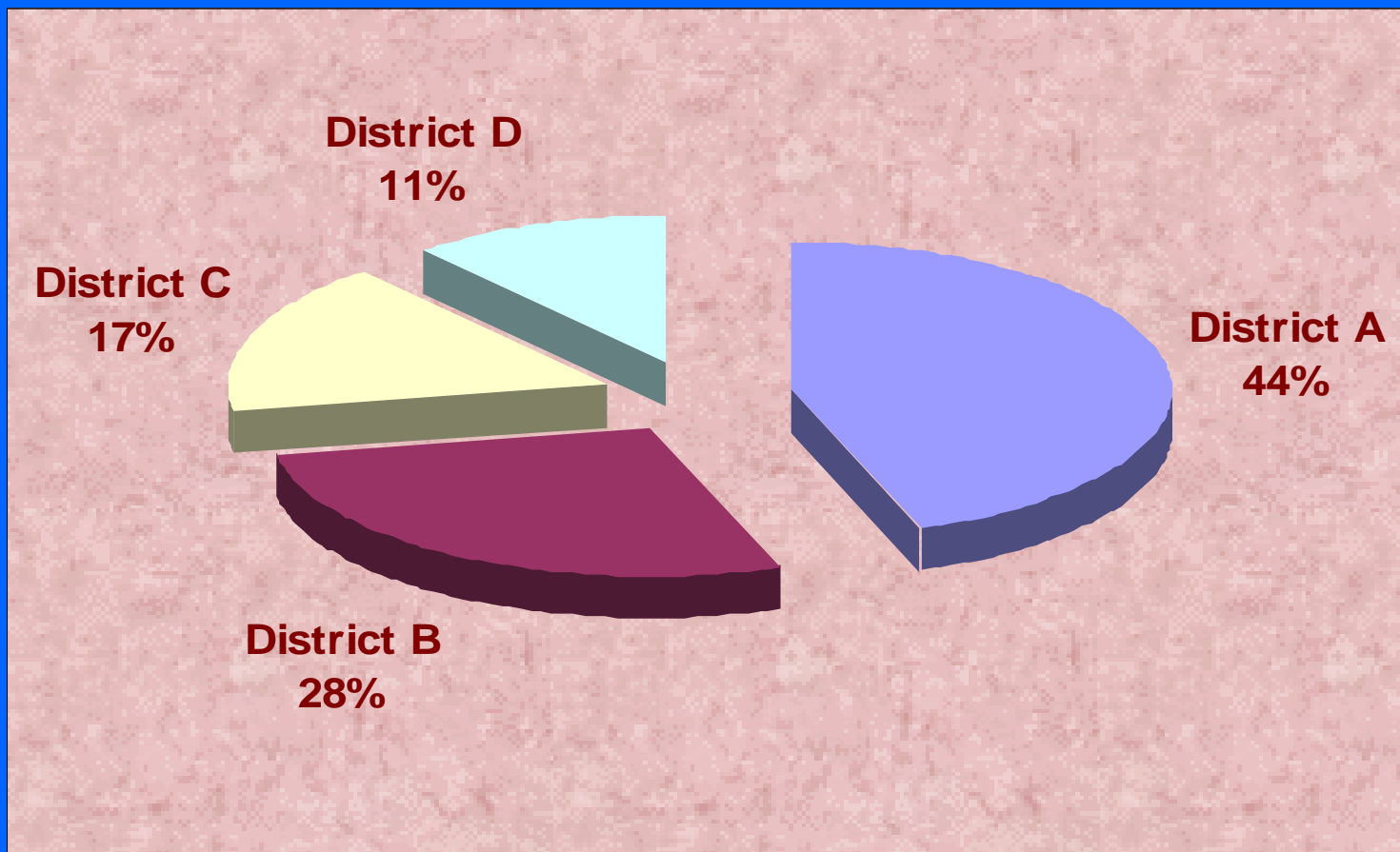


# Graphs: Area graphs



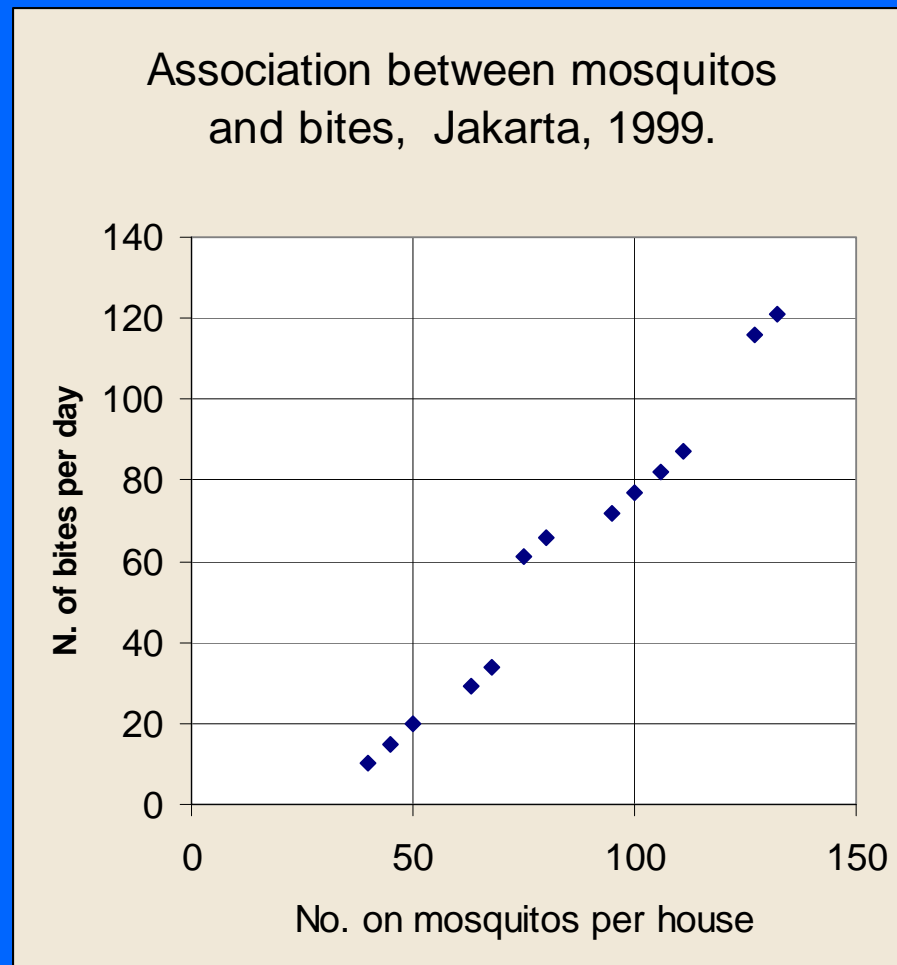


# Graphs: Pie charts





# Graphs: Scatter diagrams





# Methods of Presenting Information

---

Table

Matrix

Graph

Diagram

Flow chart

Map

Figure 7. Distance surface to 8 health facilities with TB diagnostic tools and spatial distribution of all TB cases at village level in Banjarnegara (Oct. 1999 - Sept. 2000)

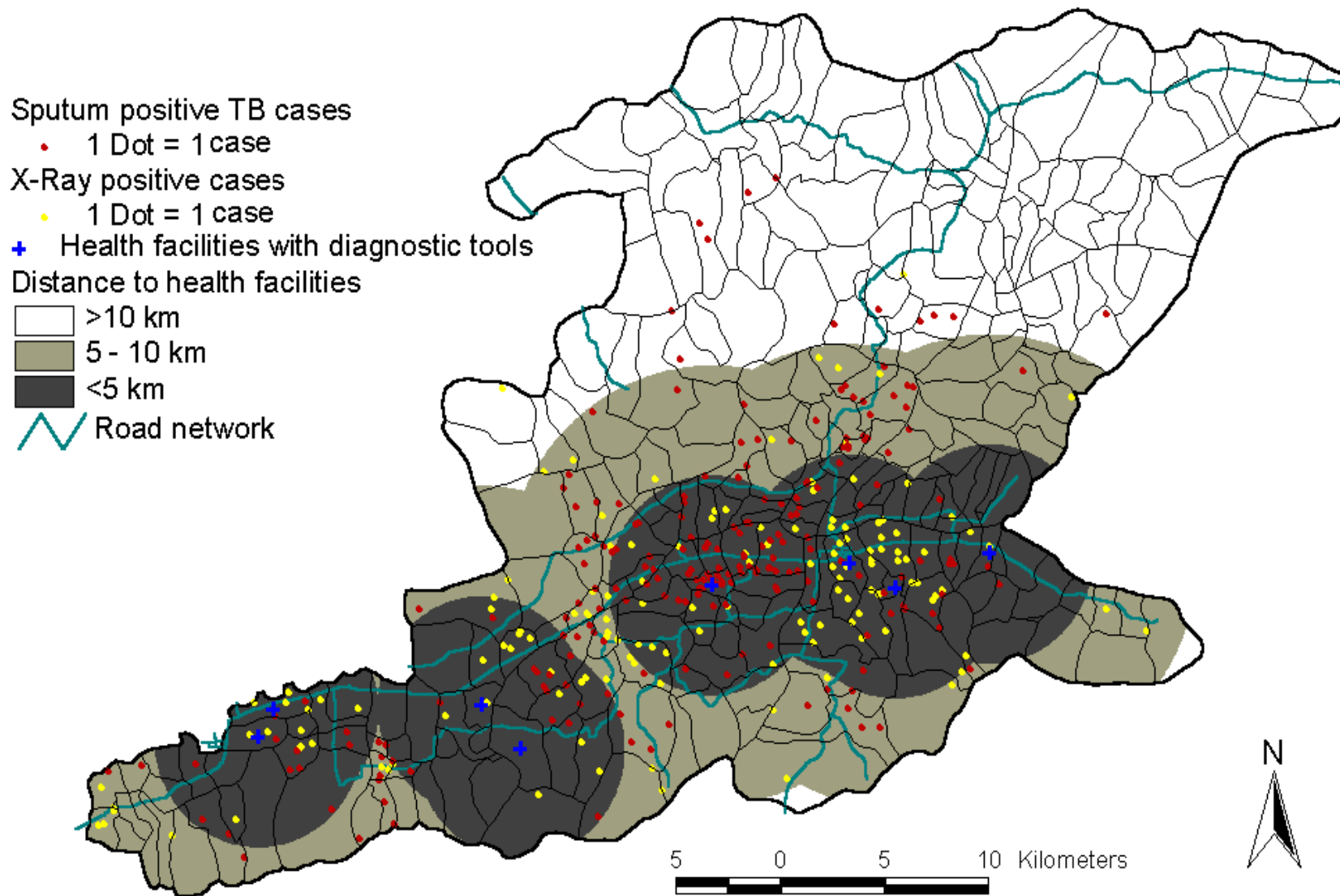


Figure 8. Community accessibility to 8 health facilities with microscopy and 2 new proposed health centres with microscopy in Banjarnegara

