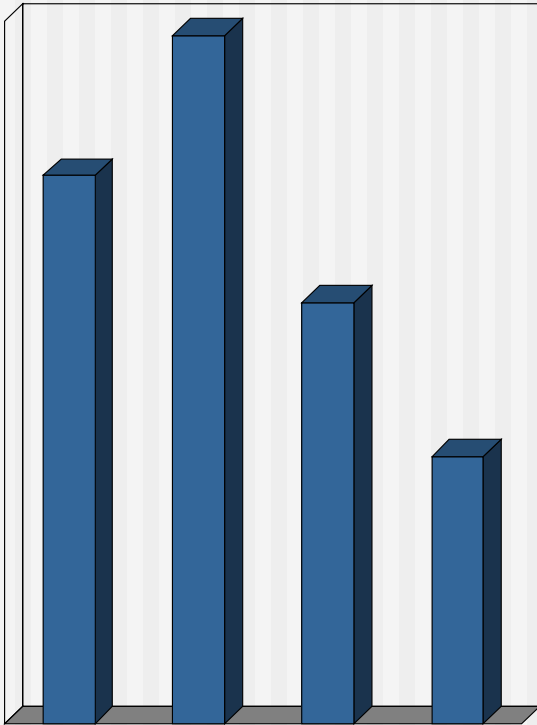


# Tables and Graphs

---



	A	B	
Y	1	2	3
Z	3	4	7
	4	6	10

# Aspects of a presentation (result of research)

Three aspects	What are they?	Relative importance
<b>Content</b>	Content of presentation, the words	7 %
<b>Vocal</b>	What they hear: voice tone, pitch, volume, speed, accent, emphasis	38 %
<b>Visual</b>	What they see: body language, clothes, hair, visual aids	55 %

# Methods of Presenting Information

---

- Table
- Matrix
- **Graph**
- Diagram
- Flow chart
- Map

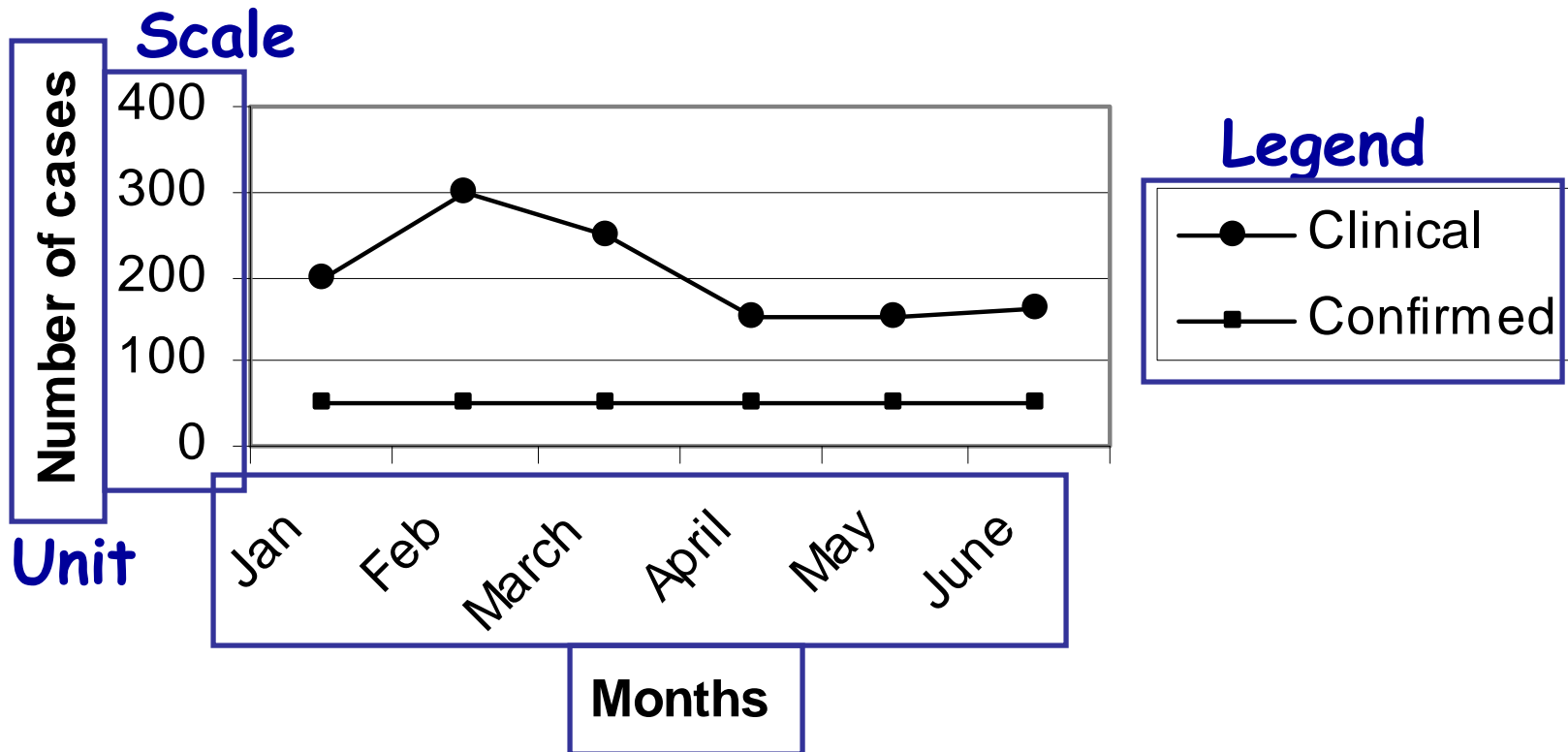
# Graphs: Elements 1

---

- Title
- Identified by number
- Axes X and Y
- Scale
- Unit of measure
- Legend
- Footnote

# Graphs: Elements 2

**Title** Number of malaria cases (clinical and confirmed), district A, Jan-June 2000.



# Graphs: Types

---

- Types of graphs
  - Stem-and-leaf
  - Histograms
  - Line graphs
    - Simple and Cumulative
  - Bar charts
    - Vertical and horizontal
    - 100 % bars
  - Area graphs
  - Pie charts, donuts
  - Scatter diagrams

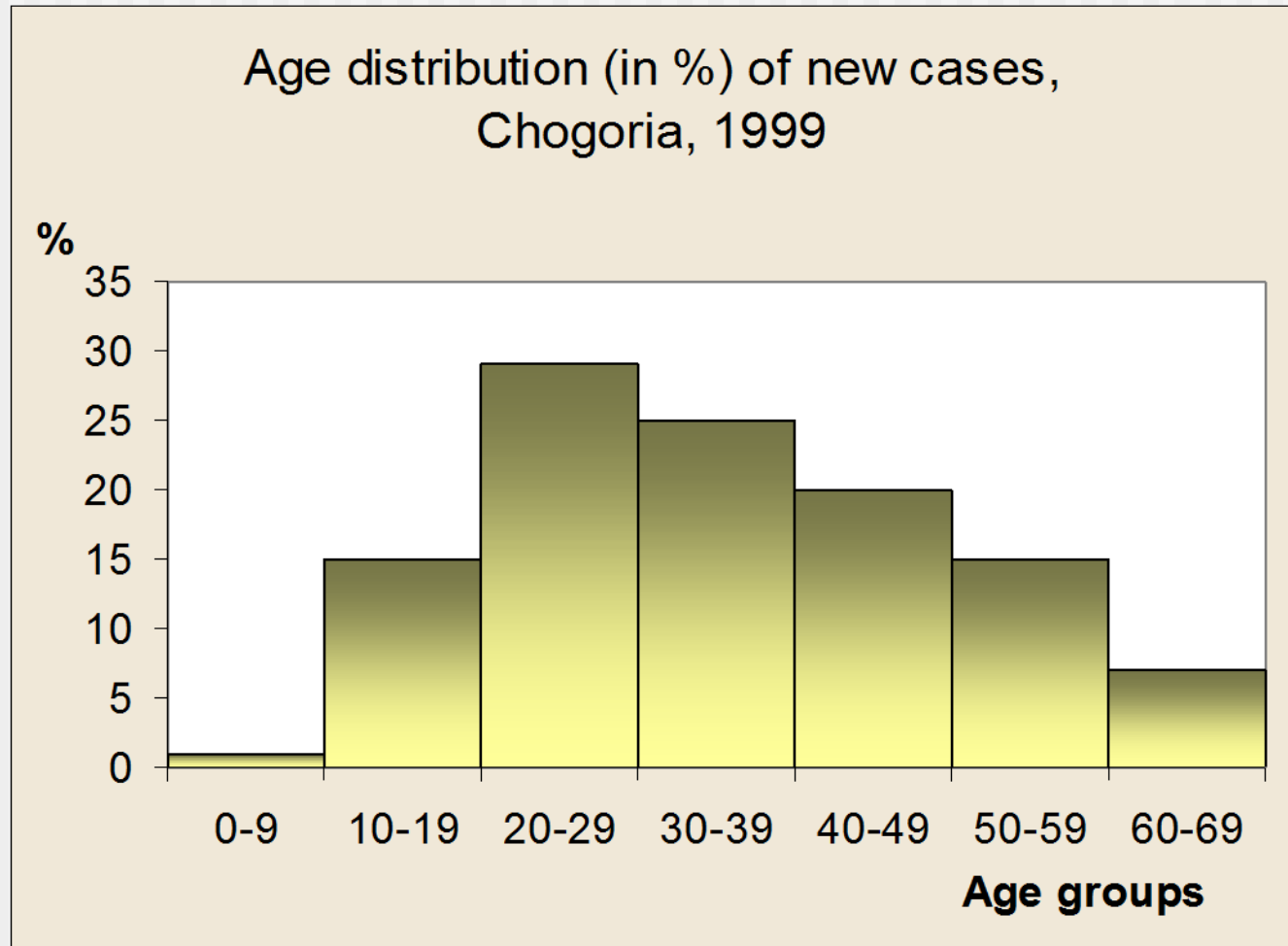
# Graphs: Stem-and-leaf

Data:

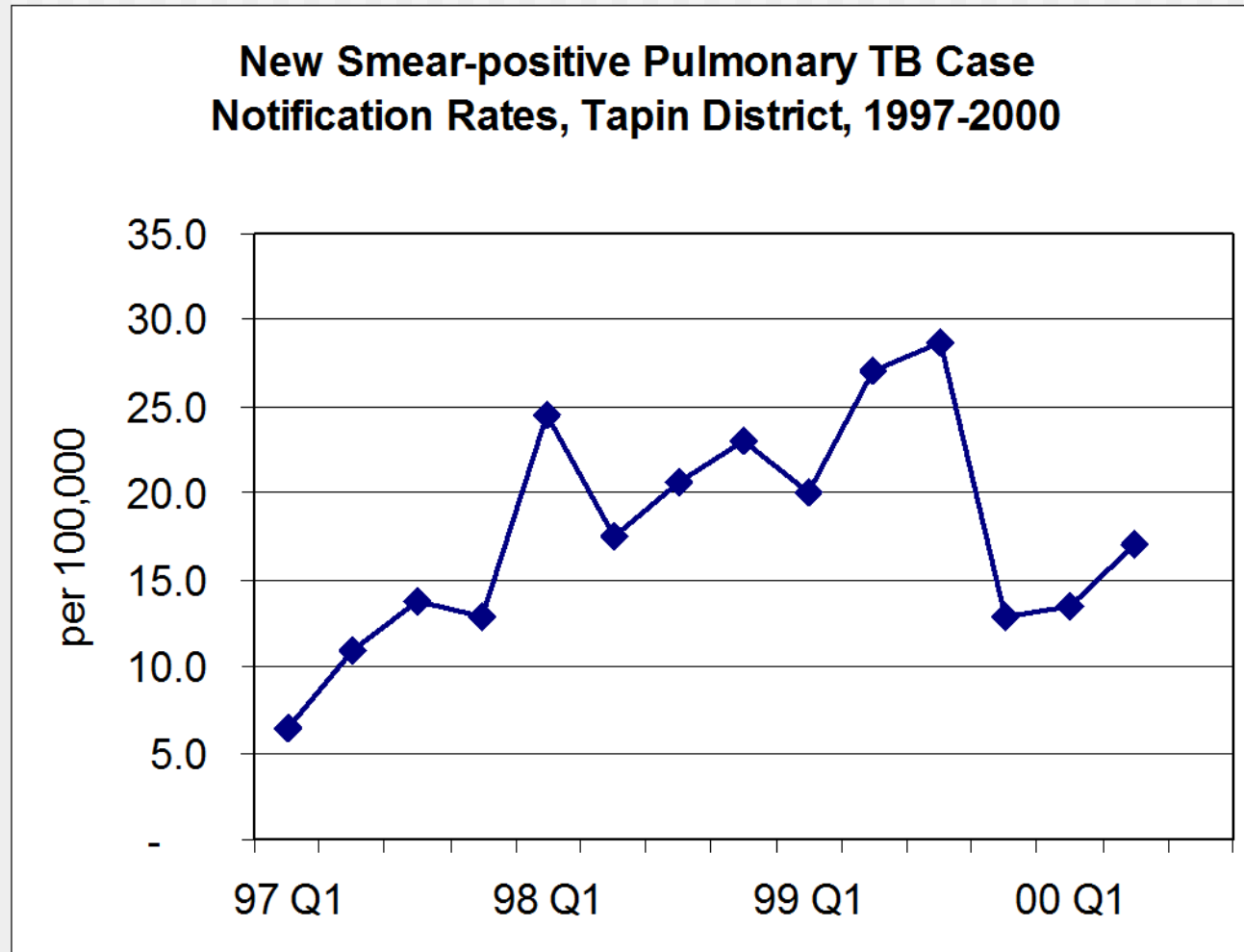
8 10 19 25 29  
35 35 36 41  
42 44 45 46  
48 50 55 67  
72

0-9	8					
10-19	10	19				
20-29	25	29				
30-39	35	35	36			
40-49	41	42	44	45	46	48
50-59	50	55				
60-69	67					
70+	72					
Age groups						

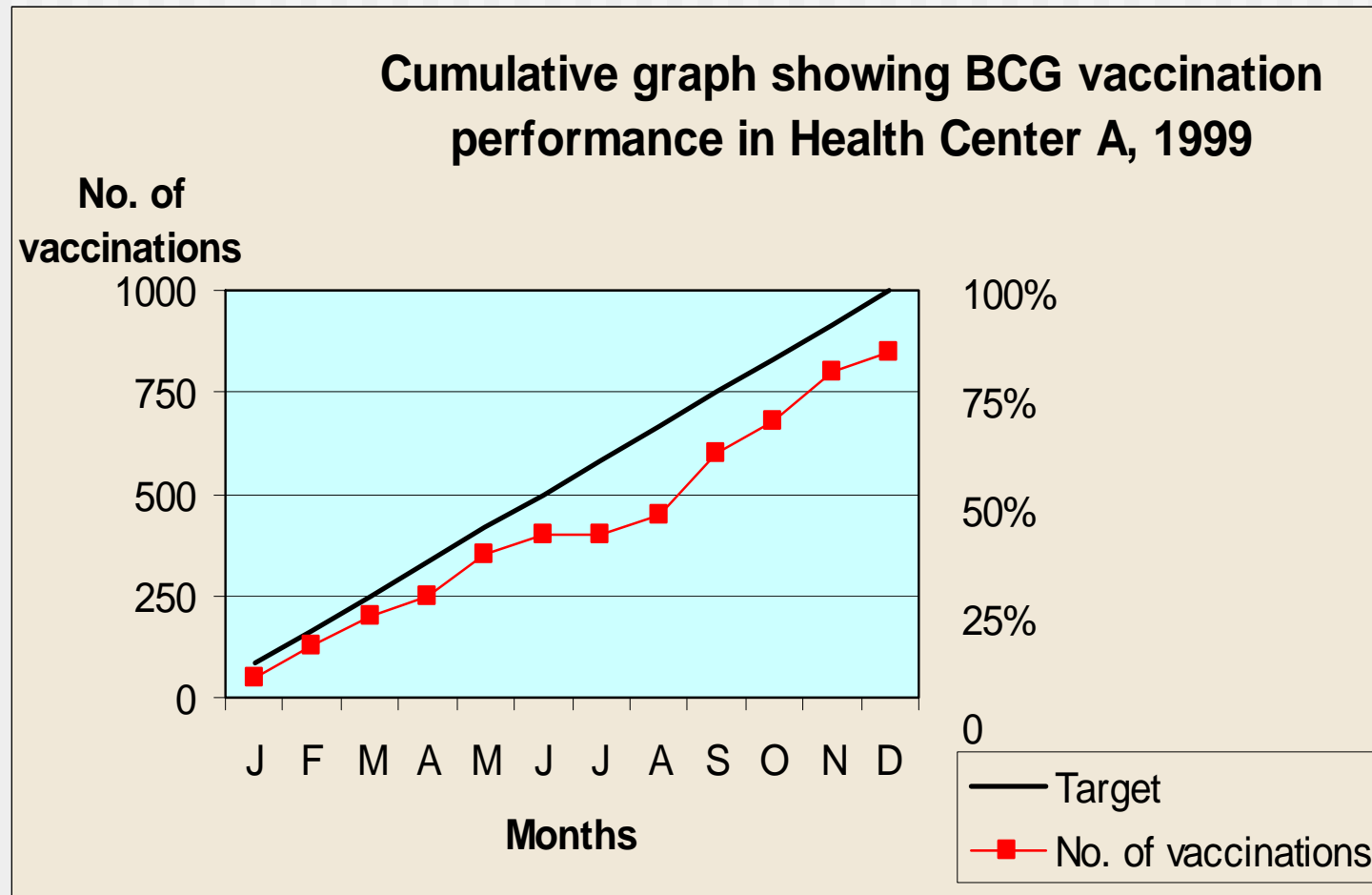
# Graphs: Histogram



# Graphs: Line graph



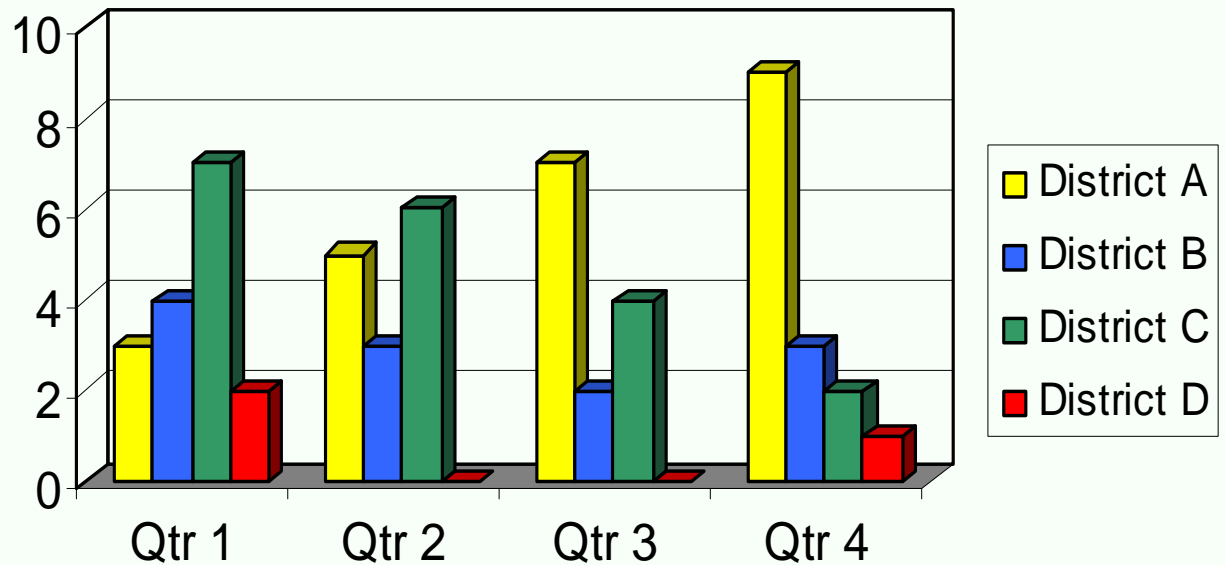
# Graphs: Cumulative line graph



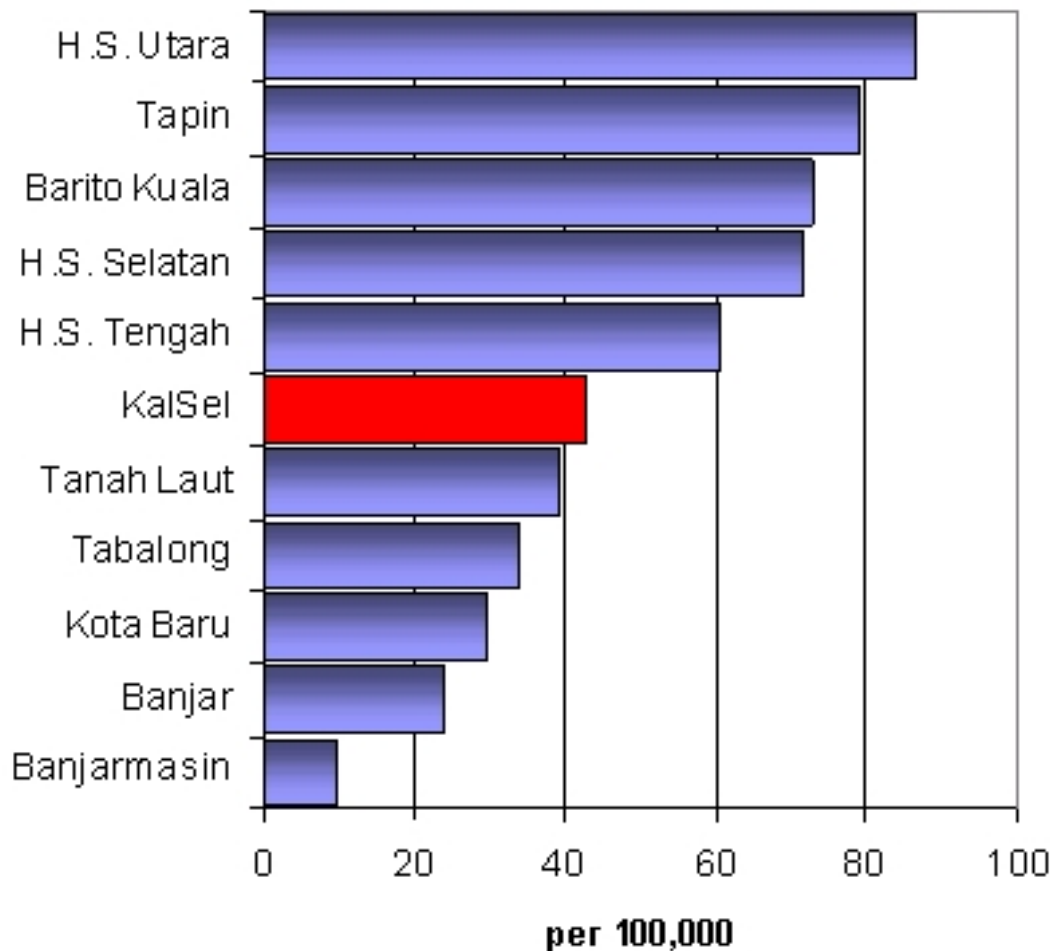
# Graphs: Bar charts 1

**New Tetanus Neonatorum cases, by District, 1999, per quarter**

**Number of  
Cases**



# Graphs: Bar Charts 2

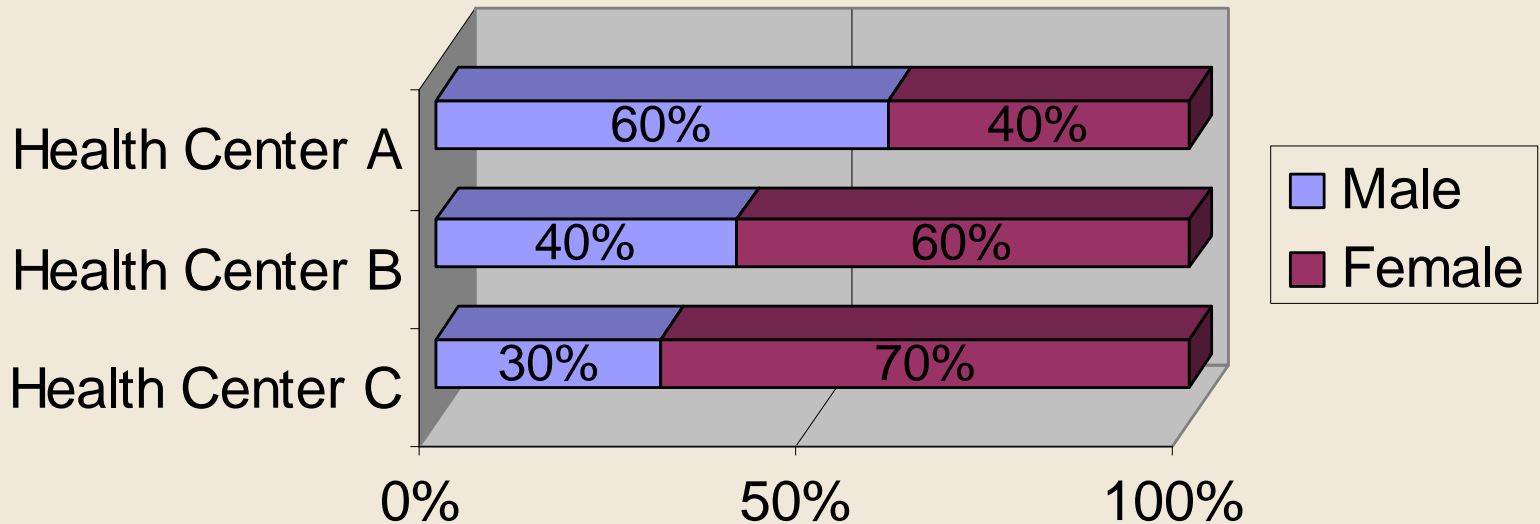


## Ranked Bar Chart

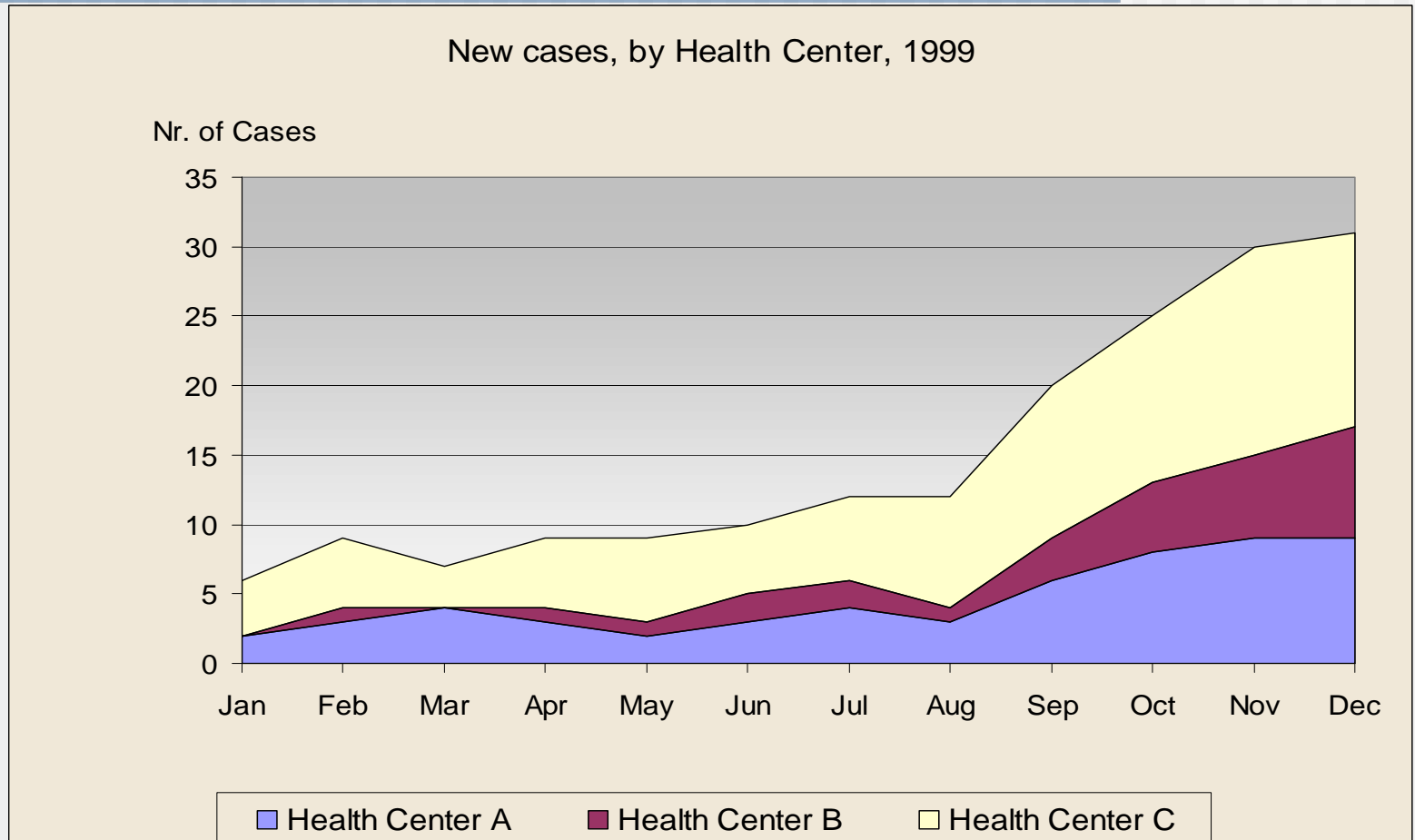
Ranked districts in order of Pulmonary Tuberculosis Case Notification Rate (smear-pos. cases), Kalsel, 1999

# Graphs: Stacked Bar Chart

**New Cases, by sex and by Health Center, Province Z, 1999.**

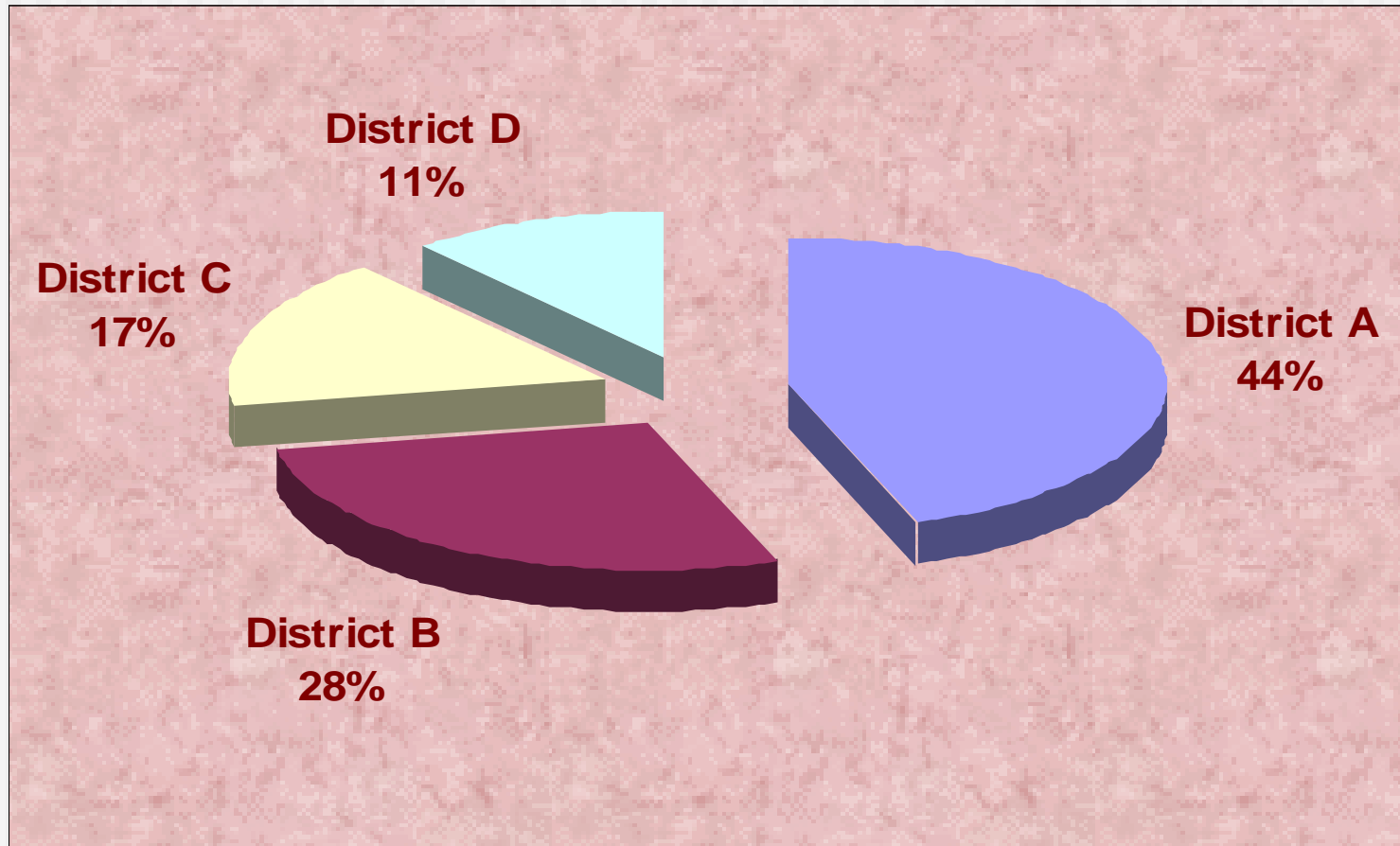


# Graphs: Area graphs

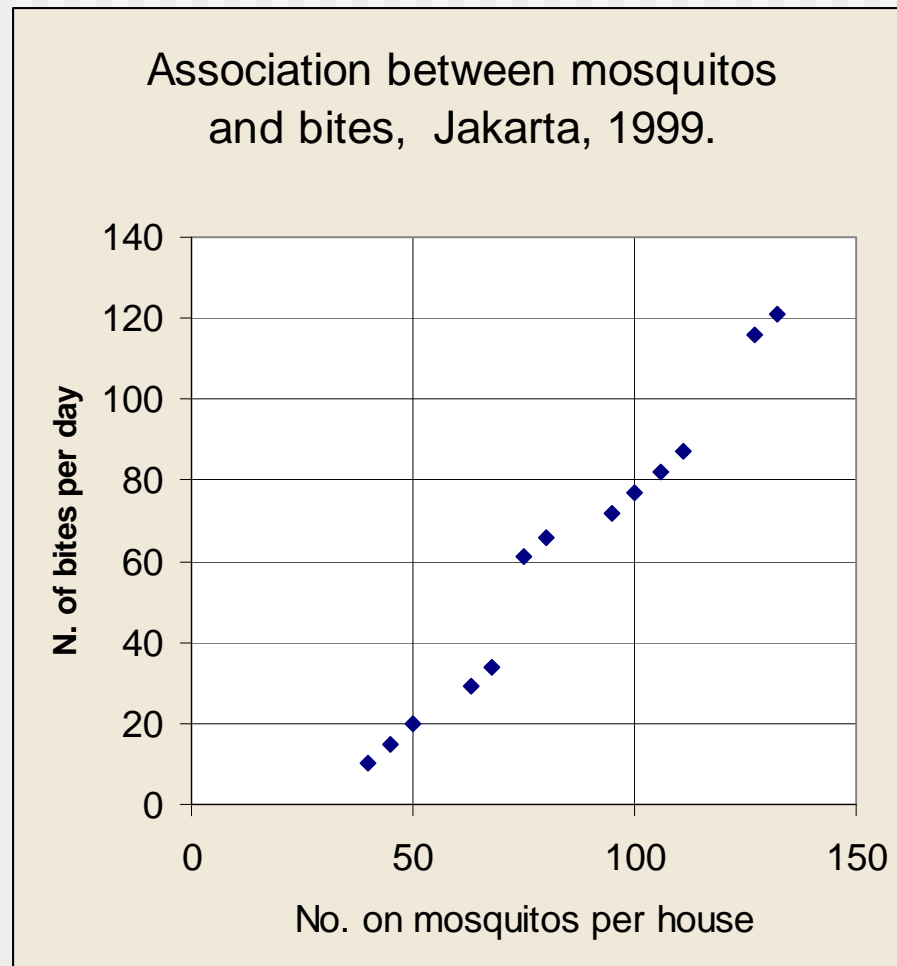


# Graphs: Pie charts

---



# Graphs: Scatter diagrams



# Methods of Presenting Information

---

- Table
- Matrix
- Graph
- Diagram
- Flow chart
- **Map**

Figure 7. Distance surface to 8 health facilities with TB diagnostic tools and spatial distribution of all TB cases at village level in Banjarnegara (Oct. 1999 - Sept. 2000)

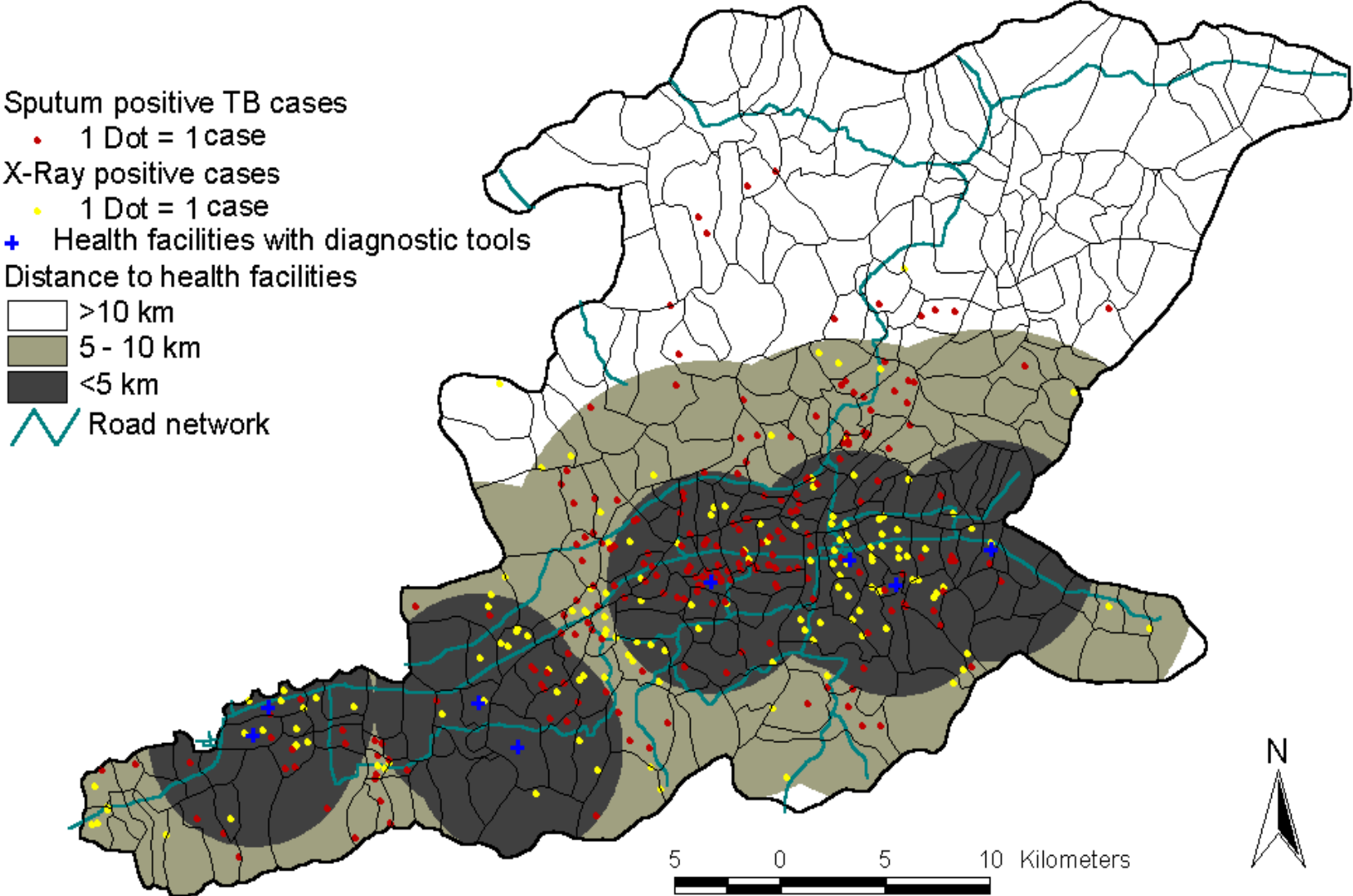


Figure 8. Community accessibility to 8 health facilities with microscopy and 2 new proposed health centres with microscopy in Banjarnegara

